

CONCORD PIECEMAKERS QUILT GUILD
NOVEMBER 2024 NEWSLETTER
GRAPEVINE

Editor: Barbara Kozenko

Wednesday November 20, 2024 In Person/Zoom (Hybrid) Meeting
6:45 PM Socializing, 7:15 PM Meeting

If you have questions about our ZoomBees, please contact
membership@concordpiecemakers.org

Programs: – Laura Rosenspan - Places, Real and Imagined

November meeting: Laura Rosenspan will share her inspiration for each of her landscape quilts, along with the story behind every scene and the methods and techniques used. Laura loves to share her secrets to inspire quilters to try some of these techniques. As part of her presentation there will be a short activity. For those on Zoom, please have a pad of paper and pencil ready, and a partner if possible.

December meeting: For our holiday party we ask members to optionally bring a sweet or savory finger food to share. We will also be collecting items for Household Goods. Household Goods provides a full range of donated furniture and household items, free of charge, to help people in need make a home. Last year they served roughly 2500 families. In the spring they collect a lot of donated items when students move out of Boston Dormitories. But those stocks typically dwindle at this time of year. If you'd like to bring a new or gently used small household item to the December meeting it would be much appreciated. This might be a good time to declutter your kitchen drawers or linen closet. Suggested items include: kitchen spatulas, knives, measuring cups, dishes, glasses, pots, towels, bedsheets, blankets, quilts, afghans, lamps, fan, or toaster. Please ensure the donated items are clean. For further ideas, see their [website](#).

The President's Message

Donna Morales-Oemig

It's hard to say which was more inspiring, Gloria Loughman's presentation last month, or our Quilt Show. Just kidding, our Show was one of the nicest I think we've ever had. It seems every show is better than the last, but this one really takes the cake, not just for the work on exhibit, but for how people pulled together to make it happen. Roughly half of us entered at least one quilt, and over a quarter of us, including the four Show chairs, stepped up to take responsibility for a function at the show. This month, we will stand up and say "Thank you" to all involved. Please don't miss this month's meeting as we show gratitude to all involved. If you were mesmerized by Gloria's work, please note we have a workshop planned, and it's coming up soon. Since she said she is getting ready to retire from teaching, you won't want to miss out on any chance to take the class we've chosen. More on this elsewhere in the newsletter.

The meeting this month features local quilter Laura Rosenspan. She will share details on her landscape quilts and will have a short activity for all the attendees. She asked to go early in the agenda, so the Show wrap-up discussion and Show and Tell will be later. See you on the 20th at the Harvey Wheeler Community Center, or on Zoom. Doors open about 6:45pm, and the meeting starts at 7:15. In the meantime,

Happy Quilting,

Donna M-O

Proposed Bylaw Change – Associate Membership Category

The Board has voted to discontinue the Associate Membership category. It no longer applies to the guild and it serves no purpose. The benefits of full and associate memberships are the same except for voting rights. Associate members cannot vote on guild business. The Associate category was developed many years ago, when newsletters and membership books were mailed rather than emailed and associates did not get the mailings. Associates were only allowed to exhibit in the Quilt Show if there was space available. We have not had space issues in recent years. Associates are also supposed to pay a \$5 fee to attend meetings, and we have been erratic in collecting the fees. We have scholarships available for anyone who would experience financial hardship with the increased dues.

The Bylaw Committee will review this proposal and if accepted, will present it to the membership. We will vote on the bylaws change at the April meeting.

Membership

Robin DeMott and Lola Chaisson

We welcome new members Patty Blakeney from Sterling and Patricia Doyle from Needham. We have 105 members now. We'll have an addendum to the membership book at the November meeting and I will email it out closer to the meeting.

CPM Quilt Show 2024

Thank you, Thank you, Thank you!

Our Quilt Show was beautiful, and we could not have done it without you. It felt wonderful to be surrounded by friends, 148 beautiful quilts and wonderful food to keep us smiling.

There will be a basket at the next meeting. Please, tell us what went well, and what we can do differently. Also, we would appreciate job descriptions, including a list of tasks and a timeline. Please send these descriptions to Carol MacFarlane.

Many thanks,
Gayle Coit, Sally Duscha, Joan Kerpelman, and Carol MacFarlane

Thank you to everyone who helped with nickel squares or donated fabric. Please stop by and pick up a mystery bag and take the challenge of making a nickel square quilt for your next comfort quilt or other project. The cutting is already done!

Thanks again,
Sally Duscha, Kathie Becker, and Barbara Weiss

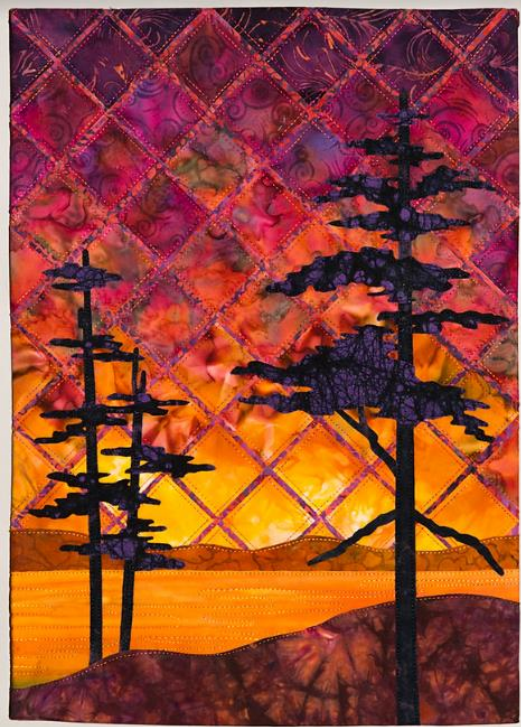


Quilt Getaway!

Marian Bressel

Keep the date: Feb 21 – 24, 2025. Never too soon to start thinking about our next Getaway!!

Upcoming Workshops



We will be having a workshop together using Gloria Loughman's "Light Up Your Landscape" online workshop. <https://www.glorialoughman.com/product-page/light-up-your-landscape-online-workshop-1>
If you're interested in participating, you will need to buy and view the online workshop on her website for \$32 Australian which is about \$21 US. We will then meet in person Saturdays **November 30 and December 7th** to talk, look at each other's fabric choices, and sew. For further photos, see the sample info in her [book listing](#). Please send an email to Tina and Leonie if you want to participate.

Additionally... Carol MacFarlane will hold her fabulous bag workshop again on Saturdays **January 18th and February 1st**. There may be a small charge for supplies. If you are interested in her workshop, please send an email to Tina and Leonie.



Current ZoomBees



Join any ZoomBee or Guild Meeting at: *** New Zoom Link!

If you have questions about our ZoomBees, please contact membership@concordpiecemakers.org

Tuesday Project ZoomBee, 1:30 - 3:30 PM

A member suggested we use this time to make small things for the 250th Show boutique. Please see our Quilt Show Members' Information page on the website for easy ideas, or bring other ideas to suggest.

Thursday Sit and Sew ZoomBee, 10 AM - 12 noon

Thursdays are still open for DIY projects. Participation has dwindled, so if we don't use the time, we can open it up for something else. We'll poll the membership for interest.

Friday Block of the Month ZoomBee, 2:00 PM – 4:00 PM (New Time)

Calling all mystery quilt lovers. The winter Bonnie Hunter Mystery colors have been chosen; aqua, melon, red, and white. This is a split complementary color scheme. (<https://www.incolororder.com/2011/11/art-of-choosing-split-complementary.html?m=1>)

This free mystery finishes sometime in January. For more information check out Bonnie Hunter's Quiltville blog - look for the Old Town Mystery tab.

Here are choices and possibilities to consider:

1. Make a smaller time commitment by making half the blocks.
2. Make blocks cooperatively for one quilt. Each person makes half or ten friends get together and each make one step. Then you can fight over who gets to keep the quilt or donate it.
3. Maybe you want to use totally different colors that's ok.

Remember, Bonnie's quilts use tiny pieces 1 1/2-inch blocks or strips are not unusual so if you do not like to work with small pieces chose another project.

Come sew with us on Fridays at 2 p.m. on zoom.

We can't tell if you are working on the BH mystery, last year's mystery, or something else. This is a great way to get to know your fellow guild members.

Comfort Quilts

Leslie Garrison

Lots of donations this month! Emerson Pediatrics were happy to receive kid-themed quilts, MANY pillowcases, and a few black and white baby mats. Some of the twin size and throw blanket size quilts went to Household Goods in Acton. Lastly, I delivered a set of twin-size quilts for the beds at the Carl Dahl house in Gardner. This working farm helps recovering addicts with complex mental health challenges and rescues unwanted farm animals. Thanks to everyone who has embraced the popular larger size quilts (at least 55x70")!

I will be bringing some fabric to the November meeting if you are looking for sashing, backing, or just some extra contrasting pieces (for comfort quilts only, please!). I will also have labels and can bring batting if you email me ahead of time.



Pillowcases For Children at Emerson Hospital

Sue Colwell and Nanette Moffa

We're very happy to report that we have 20 children themed pillowcases to deliver to Leslie this month. THANK YOU! THANK YOU! to all who contributed!!

Our need now is for cases for boys ages 8-18. When you're in a fabric store please consider those ages and pass along to others where you've shopped and found fabric that would fit that age range. Thanks SO much for contributing to make a child's stay in the hospital a little easier.





CALLING ALL QUILTERS FOR
Quilts 250:
Stitching in the Spirit of Democracy

MARCH 22-23, 2025

Concord Academy, 166 Main St, Concord, MA 01742

Quilt Submission Deadline: January 15, 2025

All rules and information can be found at:

quiltersconnection.org/Quilts250.html

This is the latest promotional post card which will be rolling off the presses soon! Have you visited the site yet? Have you entered a quilt? Quilts entered do not have to be "new." You may enter your grandmother's quilt given to you years ago. You may enter your favorite quilt. You may enter more than one quilt!

Please visit <https://quiltersconnection.org/Quilts250.html> for everything you need to know about this show!

Would you like to participate in organizing and running this historic show? We're looking for guild members to chair the various committees of this show. Suzanne Knight and Molly Eberle will oversee the lecture featuring Gerald Roy and Jennifer Swope. Marla Richmond and Mary Jalenak have stepped forward to manage Admissions at the show. If you'd like to join our growing team, please contact Gayle Coit (see email in membership book).

News from the New England Quilt Museum

Martha Supnik

Go Figure: Portraits in Textile Arts

On view October 22 through December 28, 2024

The human figure has been a favorite subject for artists since early humans began creating. From the hunters in prehistoric cave paintings to the luminous portraiture of the 18th and 19th centuries, artists throughout history have sought to convey more about their human subjects than just their physical characteristics.

The artists featured in *Go Figure* have created subjects that express the range of emotions, gestures and personal relationships that define our shared human experience. Their subjects are rendered in a diverse range of styles that utilize a variety of techniques: raw-edge applique, fabric painting enhanced by thread painting, fusible collage, photography manipulated in color and form, and piecework pixilation, to name just a few.

NEQM Curator, Pamela Weeks, has assembled a gallery full of remarkable and thought-provoking characters who will delight viewers of all ages and backgrounds.

Joe Cunningham: Quilts For These Times

On view October 22 through December 28, 2024

American artist, musician and author, Joe Cunningham, has been a professional quiltmaker for 44 years. His work can be found in major museums and in many private collections. Between 2022 and 2024, Cunningham created 10 large quilts inspired by current events. This series marks a turning point for the artist, whose latest triptych Mariupol is a voluminous 18 feet wide and 6 feet high. It is a highlight of the NEQM exhibition.

“The quilts in this show were made to be a collection specifically about events in the world chronologically created as the events arose. The idea is to end up with a poetic image of my response to two years of headline subjects. Quilts are often thought to convey a simple message of love or remembrance, and while these are intended to reflect my love of life and a desire to commemorate certain events, my hope for them is that they can carry more thematic richness than my words.” Joe Cunningham

Saturday, NOVEMBER 23, 2024 at 11 AM Joe Cunningham Lecture

Political Quilts and Textiles from the Permanent Collection

On view through December 28, 2024

In the museum store: Wonderful Gift Items for all in the family, come shop!

Rosie's Place

Kathleen Mclsaac

Wishlist

- Travel-size shampoo, conditioner, lotion, toothpaste, deodorant and body wash
- Full-size shampoo, conditioner, lotion, toothpaste, deodorant and body wash
- Toothbrushes, floss
- Chapstick
- Disposable shaving razors
- Hairbrushes, picks, and combs
- Elastic hair ties
- Socks (new & in original packaging)
- Underwear (new & in original packaging)
- Sports bras (new & in original packaging)
- Paperback and hardcover books (new & like new, no textbooks)
- Yarn (unused) and crochet hooks (new & like new)
- \$25 Gift cards** to Target, Old Navy, Walmart, CVS and Walgreens
 - *Gift cards are ideal as they allow guests to shop for the items they need most. When packaging your donation, **please keep gift cards in a separate envelope** (with gift receipts if possible) or shop here.*

Please note: the **above items should NOT be packaged as care packages but rather as loose items**. Check out our [care package guidelines](#) to see how you can create kits with full-size toiletry items.

Email me if you have any questions.

