

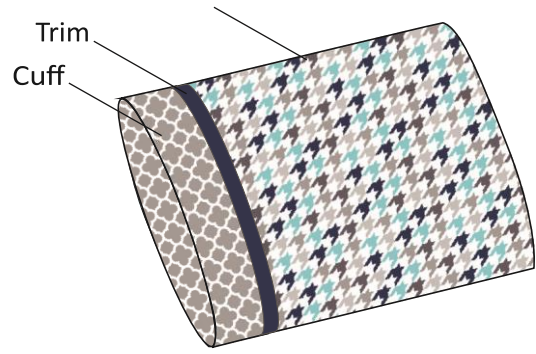
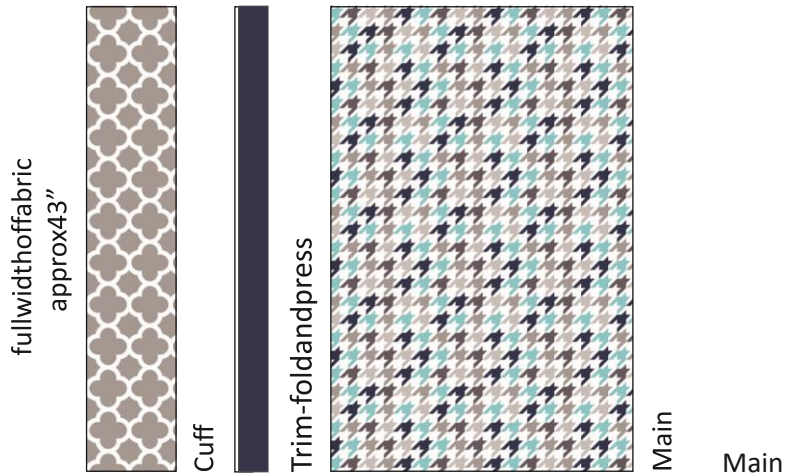
# Roll Up Pillow Case

## Fabric needed:

$\frac{3}{4}$  yard (27") main fabric

$\frac{1}{4}$  yard (9") cuff fabric

$\frac{1}{16}$  yard (2 $\frac{1}{4}$ ") trim fabric



1. Fold trim fabric in half lengthwise. Press.

2. Layer fabrics one on top of the other right-side up.

*First*, lay cuff fabric with right side up.

*Second*, lay main fabric right side up.

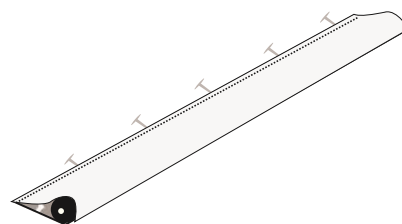
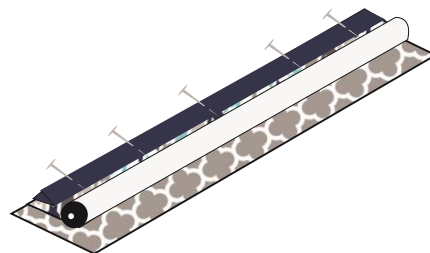
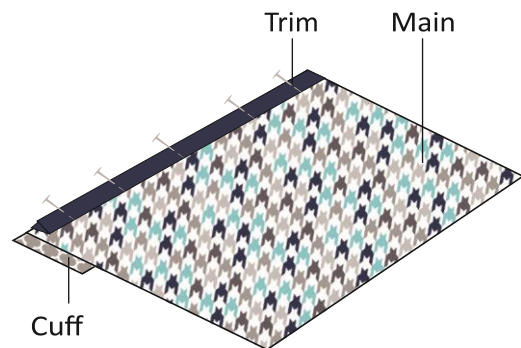
*Third*, lay the trim fabric on top.

Match raw edges. Pin in place.

3. Starting with the bottom of the main fabric, roll it up towards the top, where everything is pinned.

4. Bring cuff fabric (from the bottom of the stack) and fold it over the rolled main fabric, match raw edges and re-pin. Sew along pinned edge using  $\frac{1}{4}$ " seam allowance. Finish raw edge with a zig-zag stitch or serge the seam.

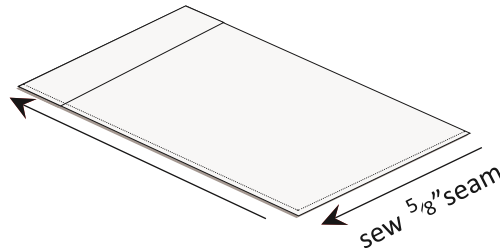
6. Turn the tube right-side out. Press the cuff/trim towards main print. Trim edges.





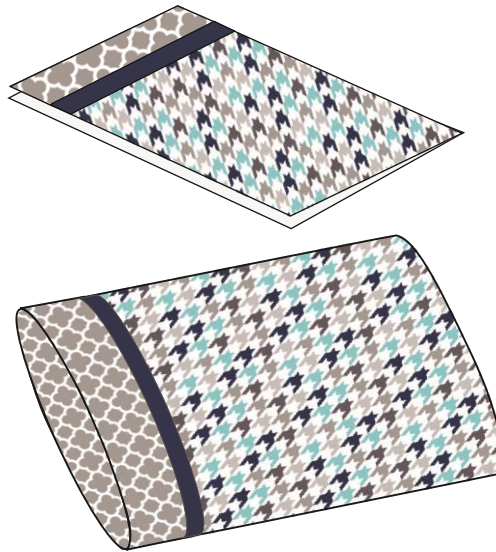
7. Side and bottom seams can be finished several ways:

a) Pin side and bottom seams with right-sides together. Sew using  $\frac{5}{8}$ " seam allowance.



OR

b) French Seam: Pin side and bottom seams with wrong-sides together. Sew using an  $\frac{1}{8}$ " seam allowance across side and bottom. Turn inside-out. Press. Pin seams and sew  $\frac{1}{2}$ " from outside edge across side and bottom again. Turn right-side out. Press.



Finished, ENJOY!

