

CONCORD PIECEMAKERS QUILT GUILD
MAY 2022 NEWSLETTER
GRAPEVINE

Editor: Barbara Kozenko

Wednesday May 18, 2022 **Zoom** Meeting
6:45 PM Socializing, 7:15 PM Meeting

Program: Business Meeting – Zoom Information

If you'd like to visit our virtual guild meeting, please contact membership@concordpiecemakers.org for the Zoom link

The President's Message

Marian Bressel

Every Spring I load up my van and head south to vend at the quilt show in Paducah, Kentucky. Paducah is probably the second largest quilt show in the country, beaten only by Houston. They are very different; Houston is in a very large convention center in the middle of the 4th largest (by population) city in the country, while Paducah is held in a small town of about 30,000. The atmosphere in each is also different: it seems that while the Houston show is larger, the city doesn't go out of its way to accommodate quilters. Paducah is delighted to have us there; "Welcome Quilters" signs are all over town, quilts are hung in shop windows, small houses turn themselves into casual restaurants, there are church suppers and a trolley between the convention center and the area with motels. (Guess which show I enjoy most!). Everyone should try to go to one of the major shows once in his/her lifetime. The quilts are always amazing, and the vendors bring wares you probably can't find locally (how about cork piping in natural or black).

Behind each of these shows is a whole unseen army of people. They receive the quilts, order the pipe and drape, hang the show, arrange for electricity and internet, deal with cranky vendors and clueless show-goers, arrange classrooms, teachers, and special exhibits, and generally make sure that the attendees have no idea of how much work all of this is.

Our upcoming quilt show is no different. It takes our (also unseen) small army of volunteers to do all the tasks that go on in a big show. Our show is known for the creativity of our members, and always gets excellent reviews from our attendees. The quilt show is our largest income producer, and it needs the input of all our members. When our show committee asks for your help, please raise your hand. Maybe even volunteer before you are asked!

The slate of board members and committee members

Board Positions

President - Marian Bressel
Vice President – Ann Bonsett
Treasurer - Mary Jalenak
Secretary - Judy Jakobsche
Historian – Marla Richmond
Membership - Robin DeMott, Lola Chaisson
Programs – Carol McFarlane, Gail Coit

Committees

Newsletter - Barbara Kozenko
Website - Tina van Roggen
Publicity - Donna Morales-Oemig
Getaway - Marian Bressel
FYN Sale – Open position
Comfort Quilts - Eileen Ryan
Quilt Show Committee - Barbara Weiss;
Suzanne Knight; Joy Sussman; Sally Duscha
and Gayle Coit
Quilt Museum liaison - Martha Supnik
Quiltathon – Marla Richmond, Joy Sussman
Membership Book - Robin DeMott
Library – Moira Ten-Hove, Co-chair open
position
Zoom Lead – Carol MacFarlane
Quilt Mentors – Martha Supnik, Claudette
Cavelier, Joy Sussman
Rosie’s Place – Kathleen McIsaac
Raffle Quilt – Mary Jalenak, Susanne Fuller

Special Project – Carol MacFarlane and Gayle Coit

Please join us in a new project to aid the people of Ukraine during this terrible time of war. We ask that every guild member make blocks either 3", 6" or 9" finished (3 1/2", 6 1/2" and 9 1/2" unfinished) using the colors of their flag (See below) in various values.

We will collect these blocks at our meeting on June 8th and arrange them into pleasing designs at the meeting. Various guild members have volunteered to piece them and quilt them. So go to your stash and/or buy some fat quarters and let's get started. Any block will do—log cabins, four patch, nine patch, friendship star, pinwheel, whatever!

If you can't make it to the June 8th meeting, please arrange to drop them off with a fellow member or contact Carol or Gayle. Thank you.



May 2022 Workshop

Carol MacFarlane, Gayle Coit

Last Chance! It's a GO!

Adventures in Double Reverse Appliqué with Ellen Lindner

Saturday, May 21, via Zoom, from 9:00 to 4:00 with an hour lunch break

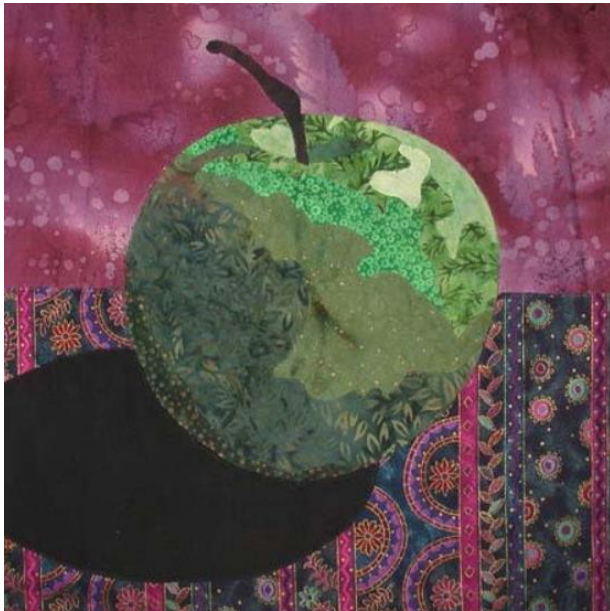
Cost: \$65

Please make checks out to Concord Piecemakers and mail to Carol MacFarlane, 86 Kettle Hole Road, Bolton, MA 01740

Questions? Contact Carol.

Check out the killer projects for this class! You'll finish the apple in class and start on the pear. This raw edged appliqué technique is extremely accurate. Ellen's tricks for staying organized will ensure that your class time is efficient, productive, and free of frustration. You'll also learn tips for making your own DRA patterns. *Note: Some facility with free motion quilting is helpful but not necessary. There is no longer a Kit fee.*

Maximum 20 students



ZoomBees



Improv ZoomBee Tuesday afternoons, 1:30 - 3:30 PM

If you have questions about this ZoomBee, please contact membership@concordpiecemakers.org

Lone/Round Robin ZoomBee 2nd Wednesday Evening Monthly, 7:00 – 9:00 PM

If you have questions about this ZoomBee, please contact membership@concordpiecemakers.org

Sit and Sew ZoomBee Thursday morning, 10:00 AM - 12 Noon

If you have questions about this ZoomBee, please contact membership@concordpiecemakers.org

Block of the Month ZoomBee Friday Morning, 10:30 AM - 12 Noon

If you have questions about this ZoomBee, please contact membership@concordpiecemakers.org

The Friday ZoomBee group is changing to a pick your own block of the month and get together and sew on Fridays. Most people have finished the Bonnie Hunter winter mystery quilt. Come join in and let's quilt together.

Art at Harvey Wheeler

Suzanne Knight

Be sure to enjoy our quilts on display at Harvey Wheeler!

Guild Challenge – Lone/Round Robin

Elana Schreiber, Sally Duscha

Medallion quilts will be revealed Wednesday, June 8th, 7 pm on zoom. Come see how members interpreted the design clues, chose new fabrics and pulled the elements together. The clues for the borders have been: square, triangle, cross, circle and wildcard. As you can imagine there is lots of scope for interpretation and artistry. Come see our medallion quilts.

***Anyone interested in doing a summer mystery, please mail a check for \$15 to Elana Schreiber (see address in our membership book). The name of the summer mystery is Run for the Border. If interested, email Elana.

Membership

Lola Chaisson and Robin DeMott

The dues for the 2022-2023 year are expected to be submitted on or before May 18. Full membership is \$30 and Associate membership is \$15. You may download a membership form from the website concordpiecemakers.org. Please make sure to update any address or email changes for the new membership book. Payment should be made by sending your completed registration form and check to: Membership Chair c/o Concord Piecemakers PO Box 1381, Concord, MA 01742-1381.

As a special incentive, all members who rejoin by May 18 will be entered into a drawing to be held at the June guild meeting. The winner will receive a free membership.

Please be prompt as late submissions run the risk of being excluded from the membership book and make more work for the Membership chair during the summer.

CPM Quilt Show - November 4-5, 2022 – Update

Joy Sussman, Barbara Weiss, Suzanne Knight, Gayle Coit and Sally Duscha

What can you do now to prepare for our November Quilt Show besides working on your quilt masterpiece?

- volunteer to chair the clean-up team for the show
- pick up your quilt registration packet from our website
- make items for the boutique to sell with the profits going to the guild or shared between the maker (70 percent) and the guild (30 percent)
- cut fabric for nickel squares, 10-inch squares, or 2 1/2-inch strips to be sold at the show
- volunteer to put together packs of fabric to be sold at the show
- save containers-large coffee cans or yogurt containers
- taste test cookies to sell at the show

A couple of details:

Quilts must be less than 95 inches wide.

The quilt show's boutique sells ornaments, wine carriers, cloth napkins, and totes---all made out of irresistible, gorgeous fabric. Other fabric or yarn creations are welcome, as well.

Dates to remember:

- | | |
|--------------|--|
| September 15 | Deadline for registering a quilt |
| October 20 | Last date to withdraw your quilt from the show |
| November 3 | Drop off your quilt or wearable |
| November 4-5 | THE SHOW! |

What else can you do now?

- Bring large yogurt containers for cookies our next meeting or drop at Suzanne Knight's house.
- Set aside books to sell at the show as you spring clean your studio.
- Measure and mark with blue masking tape 1 yard or more of super nice fabric to sell at the show.

For more information contact: Joy Sussman, Barbara Weiss, Suzanne Knight, Gayle Coit or Sally Duscha.



Nickel Squares

Sally Duscha and Barbara Weiss

Please keep cutting squares and bring them to the June meeting. We need many more and varied types of cotton fabrics/colors. Accepting layer cake size-10" squares, 2 1/2" width of fabric strips as well as nickel squares-5" squares.



Rosie's Place

Katheen Mclsaac

Another call for toiletries for Rosie's... Something else that would be gratefully received is Toothpaste. That would complete some of the unfinished Care Packages they have been collecting. Just drop them off in the bin at our next meeting.

Comfort Quilts

Eileen Ryan

Quilts are starting to move out the door with the addition of Household Goods as a receiver of your quilts. I got a lovely note from one of the volunteers there saying how appreciative everyone was of your work and how lucky the recipients felt to be wrapped in the warmth you provided them. 12 more kids' quilts went to Emerson pediatrics, leaving me with no more....

I will have kits for the little black and white mats we make for Emersons Special Care Nursery at the meeting. They don't take long to make and serve a useful purpose for the tiniest babies. Emerson has also asked for pediatric pillow cases and Maura is coordinating with her contact about providing them to Emerson once again. So, break out your fun kid prints and make a few of those, too. I'll bring copies of the directions Marian made for us years ago.

Household Goods Sewing Kits

Suzanne Knight and Tina van Roggen

This is an ongoing project for making sewing kits for Household Goods in Acton. We are especially looking for scissors and tape measures right now.

But the following is the full list:

Sturdy containers (metal, plastic) with lids to hold the supplies, tape measures, scissors (particularly 6" or less, though all sizes are fine. (No pinking shears please), thread*** (any color, partial spools are fine), pins, safety pins, needles, and buttons that you are going to throw away. Also useful are very tiny boxes for pins, and bobbins or small embroidery floss cardboard organizers to wind thread on.

***Partial spools of thread - all types, colors are VERY welcome. Some of the thread only needs enough length to sew on a few buttons or make a hem. Please - no general crafting supplies, however. Contact Tina or Suzanne if you have any donations.

We are delivering up to 45 kits a month, so all donations are appreciated!



Concord Piecemakers Membership Registration

_____ Renewal _____ New Member

For Membership Use Only

Check # _____

Date Rec'd _____

Membership Level (Please indicate one)

_____ Full (\$30): meetings, exhibit in show, workshops, newsletter and yearbook (emailed), voting rights

_____ Associate (\$15): meeting fee \$5, exhibit in show (space permitting), newsletter & yearbook (emailed)

Name (**Please Print Clearly**) _____

Make check payable to Concord Piecemakers

Return this form along with dues on or before the annual meeting in May. Membership Year is June 1st through May 31st.

-- OR --

Mail your completed form and check to:

Membership Chair, c/o Concord Piecemakers, P.O. Box 1381, Concord, MA 01742

Complete the following information **ONLY** if it has changed from last year's yearbook or if you are a new member. **Please print clearly.**

Street _____ P.O. Box _____

Town _____ State _____ Zip Code _____

Phone _____ Email _____

Please indicate your interest in the following guild opportunities. Check all that pertain.

Activities

_____ Quiltathon

_____ Yard Sale

_____ Raffle Quilt

_____ Quilt Show

_____ Programs

_____ Chair a committee

_____ Be a board member

Charity

_____ Make Comfort Quilts

_____ Bind Comfort Quilts

_____ Make Pillowcases

_____ Quilts of Valor

_____ Make String Blocks

_____ Donate Nickel Squares

_____ Hospitality

Special Interest Groups

_____ Wearable Arts

_____ Daytime Comfort Quilts

_____ Machine Embroidery

_____ Miniature Quilts

_____ Art Quilts

_____ "More Before" demos

_____ Open Sew

Other Interests _____