

CONCORD PIECEMAKERS QUILT GUILD

APRIL 2022 NEWSLETTER

GRAPEVINE

Editor: Barbara Kozenko

Wednesday April 20, 2022 **In Person** Meeting
6:45 PM Socializing, 7:15 PM Meeting

Harvey Wheeler Center, 1276 Main Street, Concord, MA 01742

Program: Betsy Habich—Thread Painting: It's all about the Details

A short introduction to Betsy's pieced and appliquéd pictorial quilts shows the quilting style she developed to support the images, a bridge to thread painting. Then we see how to make a photorealistic thread painting: selecting the right photo, printing it on fabric, seeing all the colors in the piece, selecting threads, different stitches, blending colors smoothly, representing texture, and paying attention to detail. Finally, we follow the landscape thread-painting from start to finish, to show how a painting actually develops. <https://betsyhabich.com/>



The President's Message

Marian Bressel

"Spring has sprung, the grass is riz, I wonders where the birdies is." Well, I know where some of the birdies is, they is at the New England Quilt Museum. Or, rather, they *were* at the Museum. They have all flown back to their nests. It was a spectacular exhibit. I would encourage all our members to take advantage of our guild sponsorship of the museum. We have free tickets available for you to use. Please contact Martha Supnik, our museum liaison, for details. And check the museum's website, www.neqm.org for upcoming exhibitions and events. It's a wonderful resource, and as the weather gets better, a great place for an outing. The Lowell National Park is right next door.

Along with the springing of Spring, we are commencing our in-person meetings for the next 3 months, barring any major uptick in nasty diseases. Our own wonderful resource, the library, will be open for us to use. There are many inspirational, and how-to-do-it, books available. Looking for your next quilt project? Check it out (pun intended) before the meeting.

Also commencing are some of the major quilt shows. I am off to Paducah for one last large vending gig (I am getting older, surprisingly enough) at the end of April. You owe it to yourself to attend at least one major show in your lifetime. The energy is amazing, the exhibits outstanding, and the vendors eager to help you with your next project (or 2, or 3...). Our show is also starting up, and we need everyone to contribute to its success. It's our biggest money-maker and allows us to hire interesting speakers and pay for the Quiltathon. We are known for the quality of our show, and it is so gratifying to have it proceed. Please say "yes" when asked to volunteer for the show.

Happy Spring Holiday to all.

Marian



April 2022 Workshop

Carol MacFarlane, Gayle Coit

Workshop Updates

***Betsy Habich's Thread Painting workshop has been canceled due to lack of signups. But we are replacing it with a new offering.

FREE, Saturday, April 23, 9 am to 12 noon, Harvey Wheeler Auditorium

Free Motion Quilting for Beginners with Carol MacFarlane

Are you tired of stitch-in-the-ditch quilting? Tired of straight-line quilting? Or quilting by check? Perhaps it's time to give free motion quilting a try. What's holding you back? Come and try some easy-to-learn patterns. It does take practice, but what better way to practice than on your most recent comfort quilt? This workshop is designed for beginners to free motion quilting. Perhaps that's you!

Although this guild-supported workshop is free to you, you will need to sign up by contacting Carol, so that she knows how many sets of handouts to print. Please contact Carol ASAP.

You will need your machine, a free motion foot (that fits your machine!), quilting gloves (are helpful), 50 wt. thread, a 90/14 needle, and about 10-12 quilting sandwiches, which are 9" to 12" square (or rectangular). (Use leftover batting, if you have it, and solid fabric—muslin will do). Measurements do not have to be exact. You just want your sandwiches big enough for practicing. They can be rectangular, but at least 9" is best. It's best to put them together with spray adhesive and avoid pins.



May 2022 Workshop

Carol MacFarlane, Gayle Coit

Adventures in Double Reverse Appliqué with Ellen Lindner

Saturday, May 21, via Zoom, from 9:30 to 4:30 with an hour lunch break

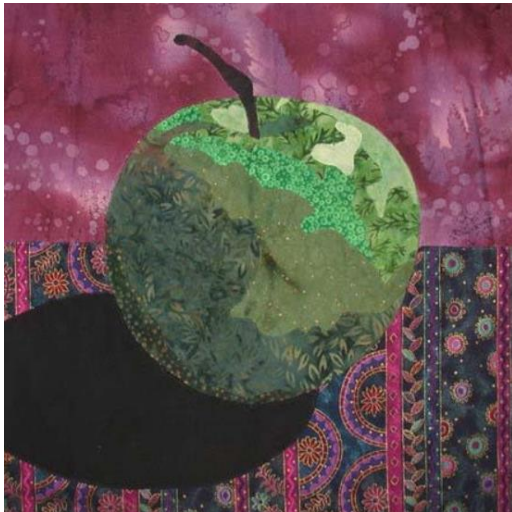
Cost: \$65

Please make checks out to Concord Piecemakers and mail to Carol MacFarlane. See home address in our membership book.

Questions? Contact Carol.

Check out the killer projects for this class! You'll finish the apple in class and start on the pear. This raw edged appliqué technique is extremely accurate. Ellen's tricks for staying organized will ensure that your class time is efficient, productive, and free of frustration. You'll also learn tips for making your own DRA patterns. *Note: Some facility with free motion quilting is helpful but not necessary. There is no longer a Kit fee.*

Maximum 20 students



ZoomBees



PLEASE NOTE: ALL ZOOMBEE LINKS HAVE BEEN CHANGED (AGAIN!)

Improv ZoomBee Tuesday afternoons, 1:30 - 3:30 PM

If you have questions about this ZoomBee, please contact membership@concordpiecemakers.org

Lone/Round Robin ZoomBee 2nd Wednesday Evening Monthly, 7:00 – 9:00 PM

If you have questions about this ZoomBee, please contact membership@concordpiecemakers.org

Sit and Sew ZoomBee Thursday morning, 10:00 AM - 12 Noon

If you have questions about this ZoomBee, please contact membership@concordpiecemakers.org

Block of the Month ZoomBee Friday Morning, 10:30 AM - 12 Noon

If you have questions about this ZoomBee, please contact membership@concordpiecemakers.org

The Friday ZoomBee group is changing to a pick your own block of the month and get together and sew on Fridays. Most people have finished the Bonnie Hunter winter mystery quilt. Come join in and let's quilt together.

Art at Harvey Wheeler

Suzanne Knight

Thank you to all who agreed to show their small quilts at Harvey Wheeler. The display will run from Thursday, April 21 until Thursday, June 2nd.

Suzanne Knight, Molly Eberle and Carolyn Duff will do the installation of 21 quilts made by 15 members showing a variety of techniques and creative ideas. Harvey Wheeler stipulates the quilts not be hung by sleeves, rods, etc. so they will be attached to the wall with removable, Velcro strips.

Guild Challenge – Lone/Round Robin

Elana Schreiber, Sally Duscha

Medallion Quilts are Growing!

We met on March 9th to share a medallion quilt, get inspiration for borders, or just to encourage the medallion quilt-makers-- as some are in the homestretch.

We started with a center block, and now the quilts are 38 inches or more (or less). A lot of beautiful piecing has happened in those 38 inches! The clues for the borders have been: square, triangle, cross and now circle. As you can imagine there is lots of scope for interpretation and artistry. Some of us have passed our quilts around for each border. Others have worked on their own quilt using the clues. For all of us, figuring out what comes next has taken some time as each quilter has put their own spin on it. It's been a lot of fun.

There's still time to start your own, as you can make it as simple or as complicated as you wish. As with all quilting, it isn't a race.

Membership

Lola Chaisson and Robin DeMott

Our Annual Membership Drive kicks off in April. The renewal form is attached to this newsletter. Next year includes the Quilt Show and a packed schedule of speakers thanks to the hard work of our Program Chairs. Renew by May 18th and you will be entered in the raffle for free membership. Please make sure to update any address or email changes for the new yearbook. The membership renewal form can also be found on the Concord Piecemakers website under Becoming a member. <https://concordpiecemakers.org/wp-content/uploads/2020/04/Membership-Renewal-Form-2020-2021.pdf>

CPM Quilt Show - November 4-5, 2022 - Update

What can you do now to prepare for our November Quilt Show besides working on your quilt masterpiece?

- volunteer to chair the clean-up team for the show
- pick up your quilt registration packet at the meeting or off our website
- make items for the boutique to sell with the profits going to the guild or shared between the maker (70 percent) and the guild (30 percent)
- cut fabric for nickel squares, 10-inch squares, or 2 1/2-inch strips to be sold at the show
- volunteer to put together packs of fabric to be sold at the show on Thursday, April 28th
- save containers-large coffee cans or yogurt containers
 - taste test cookies to sell at the show

A couple of details:

Quilts must be less than 95 inches wide.

The quilt show's boutique sells ornaments, wine carriers, cloth napkins, and totes---all made out of irresistible, gorgeous fabric. Other fabric or yarn creations are welcome, as well.

Dates to remember:

- September 15 Deadline for registering a quilt
- October 20 Last date to withdraw your quilt from the show
- November 3 Drop off your quilt or wearable
- November 4-5 THE SHOW!

For more information contact: Joy Sussman, Barbara Weiss, Suzanne Knight, Gayle Coit or Sally Duscha.

Nickel Squares

Sally Duscha and Barbara Weiss

Please keep cutting squares and bring them to the April meeting. We need many more and varied types of cotton fabrics/colors. Accepting layer cake size-10" squares, 2 1/2" width of fabric strips as well as nickel squares-5" squares.

We will be packaging fabric on Thursday, April 28th at Barbara Weiss' Harvard home at 9:30 a.m. Wear your mask while inside and then we will picnic outside for lunch. Join us. Contact Barbara Weiss for more information.

Rosie's Place

Katheen Mclsaac

Rosie's Place is starting to expand their wish lists again. The requests for Care Packages are posted again and I have copied it below.

Choose a type of package you'd like to make: Toiletry, Art or Personal Care.

1. Assemble items from the list below and place in a one-gallon re-sealable bag.
2. Clearly label bag TOILETRY, ART or PERSONAL CARE.

Option 1: Toiletry

Toothpaste; Toothbrush; Deodorant; Feminine care products; Lip balm; Shampoo; Conditioner; Soap; Lotion

Option 2: Art

Adult coloring book; Markers or colored pencils and pencil sharpener; Blank journal; Stickers; Pencil/pen; Activity book like Sudoku, word search or crosswords

Option 3: Personal Care

Socks; Underwear (size written on bag); Adhesive bandages; Wipes; Hand sanitizer

Frequently Asked Questions

Do all items need to be new?

Yes – all items in any of the care packages need to be new and unopened.

Is it OK if I don't include all of the items listed under each option in the package?

Yes – you do not need to include all of the items listed, but you should end up with a filled bag.

Can I include items not on these lists?

Please only include items on the above lists in the packages.

If you have time, check the Rosie's Place Web site. There are options for food, shelter, etc donations. These you can do directly on the web site.

As usual, there were lots of smiles and thanks when I dropped off the toiletry donations from the Gathering. We Concord Piecemakers truly bring support, kindness, and caring to all at Rosie's.

Comfort Quilts

Eileen Ryan

The quilts are rolling in from Quiltathon! Thank you so much for your participation. I have several that would look good with machine quilting if you'd like to try your hand at it. Already pin basted.

I have done a couple of deliveries to Household Goods, who provide for the needs of 2500 families per year and one to the Veterans Administration in Bedford. There was much praise for your work from all!

Household Goods Sewing Kits

Suzanne Knight and Tina van Roggen

This is an ongoing project for making sewing kits for Household Goods in Acton. We are especially looking for scissors and tape measures right now.

But the following is the full list:

Sturdy containers (metal, plastic) with lids to hold the supplies, tape measures, scissors (particularly 6" or less, though all sizes are fine. (No pinking shears please), thread*** (any color, partial spools are fine), pins, safety pins, needles, and buttons that you are going to throw away. Also useful are very tiny boxes for pins, and bobbins or small embroidery floss cardboard organizers to wind thread on.

***Partial spools of thread - all types, colors are VERY welcome. Some of the thread only needs enough length to sew on a few buttons or make a hem. Please - no general crafting supplies, however. Contact Tina or Suzanne if you have any donations.

We are delivering up to 45 kits a month, so all donations are appreciated.



**Concord Piecemakers
Membership Registration**

For Membership Use Only	
Check #	_____
Date Rec'd	_____

_____ Renewal _____ New Member

Membership Level (Please indicate one)

_____ Full (\$30): meetings, exhibit in show, workshops, newsletter and yearbook (emailed), voting rights

_____ Associate (\$15): meeting fee \$5, exhibit in show (space permitting), newsletter & yearbook (emailed)

Name (**Please Print Clearly**) _____

Make check payable to Concord Piecemakers

Return this form along with dues on or before the annual meeting in May. Membership Year is June 1st through May 31st.

-- OR --

Mail your completed form and check to:

Membership Chair, c/o Concord Piecemakers, P.O. Box 1381, Concord, MA 01742

Complete the following information **ONLY** if it has changed from last year's yearbook or if you are a new member. **Please print clearly.**

Street _____ P.O. Box _____

Town _____ State _____ Zip Code _____

Phone _____ Email _____

Please indicate your interest in the following guild opportunities. Check all that pertain.

Activities

_____ Quiltathon

_____ Yard Sale

_____ Raffle Quilt

_____ Quilt Show

_____ Programs

_____ Chair a committee

_____ Be a board member

Charity

_____ Make Comfort Quilts

_____ Bind Comfort Quilts

_____ Make Pillowcases

_____ Quilts of Valor

_____ Make String Blocks

_____ Donate Nickel Squares

_____ Hospitality

Special Interest Groups

_____ Wearable Arts

_____ Daytime Comfort Quilts

_____ Machine Embroidery

_____ Miniature Quilts

_____ Art Quilts

_____ "More Before" demos

_____ Open Sew

Other Interests _____