

CONCORD PIECEMAKERS QUILT GUILD
FEBRUARY 2022 NEWSLETTER
GRAPEVINE

Editor: Barbara Kozenko

Wednesday February 16, 2022 **ZOOM** Meeting
6:45 PM Socializing, 7:15 PM Meeting

Program: Pre-Quiltathon Comfort Quilt Tops and Regular Show and Tell

Please send a photo of your quilt top labeled regular or comfort quilt to Marian Bressel (see email in membership book) to show at the guild meeting. All tops will be admired, and you can ask for thoughts about borders, "quilt as desired" ideas, and more.



Concord Piecemakers Quilt Guild

Here we are wrapped in comfort quilts!

Join our Guild Zoom Meeting

If you'd like to visit our virtual guild meeting, please contact
president@concordpiecemakers.org

The President's Message

Marian Bressel

Isaac Asimov wrote that any sufficiently advanced technology is indistinguishable from magic. And I agree. I haven't a clue as to how all this works, but I love technology (magic!)! Ten years ago, we would not have been able to magically see each other via computer the way we are going to do this month. We are into our 3-month foray with Zoom meetings. Although Zoom is not perfect, it is such a relief not to be driving in the snow and ice or worrying about others doing the same thing. I can be snug at home, maybe even in pajamas, and enjoy our monthly meeting. I hope a lot of you join via Zoom.

We will gather in person for our Quiltathon on February 26 at St Matthew's Church in Acton. The Quiltathon is our major source of comfort quilts, of which we make over 100 a year. Our quilts are very much appreciated by the recipients; a tangible offering of encouragement and comfort from our hearts to theirs. And technology plays a role here as well. The beautiful fabric is made, perhaps with the exception of the printing of batiks, by intricate machinery. Our electric sewing machines work overtime finishing off the quilts. We do not heat our irons on a wood stove. The pins and thread we use are also fabricated by specialty machinery. And we deliver the quilts via automobile rather than horse and buggy.

I get angry when I hear "technology" used as a swear word. Yes, it can be annoying when the "call that is very important to us" takes an hour to get answered; when the computer crashes and loses the last draft of an important document (did you "save" it?); when your cell phone drops a call in the middle (do you remember a time when you had to find a pay phone and have change to put into it?). But technology also made indoor plumbing possible, visits to the children in California fairly easy (no covered wagon necessary) and our guild able to keep in touch, virus or no. So, join us magically on Zoom. See you then. (Technology: the application of scientific knowledge for practical purposes).

Marian



The Quiltathon is coming! The Quiltathon is coming!

Marla Richmond

It's Almost Here!

The annual Quiltathon takes place at St. Matthew's Church, Acton on Saturday, February 26 from 9:00 to 3:00.

We request that you bring the following:

1. Mask.
2. Quilt top with matching back. Please pin the dimensions of the quilt top to the quilt. You can wrap it up in a string of fabric.
3. A munchie (do you remember what that is?) or snack to feed a small group of starving quilters.
4. Your scissors (with your name on them), a thimble and whatever else makes it easier for you to sew.
5. A big smile.

We will supply:

1. coffee (high test and low)
2. water
3. cold sandwiches for lunch

4. batting

- If you plan to bring your machine, please inform Marla a.s.a.p. so we know where to put you.

All together we will have a grand old time making comfort quilts for those in need. Quilts that are better off machine quilted will be separated on arrival. Those being tied will get the chance to “tie one on”. It’s going to be great fun and good for the heart!

April 2022 Workshop

Carol MacFarlane

Revised--Thread Paint Your Own Photograph! (Or Autumn Leaf) with Betsy Habich

Saturday, April 23, 9:00 - 4:00, Congregational Church, Harvard, MA

Sign up by March 15th (We need 12 signups or we will have to cancel.) Workshop fee of \$60

Make checks out to Concord Piecemakers and mail to Carol MacFarlane, 86 Kettle Hole Road, Bolton, MA 01740



For students who want to work on their own photo, please send two options of a photo to Betsy (betsy@betsyhabich.com) by April 11th. Successful first thread paintings start with photos that are:

- -in focus
- -well lit

- -a simple subject (an animal's face, a flower, an uncluttered landscape)
- -please, no human faces!

Betsy will review and possibly edit your photo (may crop or adjust the color in your photo, with your approval), will print your photo on fabric, make the fabric sandwich and bring it to the workshop!

The workshop starts with an explanation of thread painting basics, including balancing sewing machine tension, straight-stitch and zig-zag thread painting, and tips for avoiding distortion, then discusses each student's project. By sharing the varied techniques to be used in each project, all workshop participants will gain broader knowledge of thread-painting methods for different effects. (Kit fee for review and printing your photo on fabric: \$30, payable to Betsy)

May 2022 Workshop

Carol MacFarlane

Adventures in Double Reverse Appliqué with Ellen Lindner

Saturday, May 21, via Zoom, from 9:30 to 4:30 with an hour lunch break

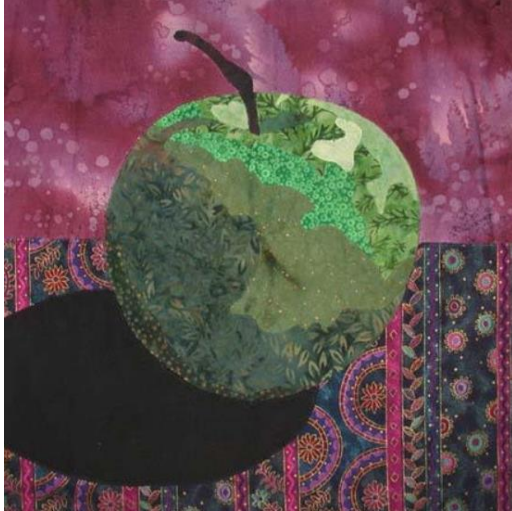
Early Bird Discount: \$65 if paid by March 15, \$75 if paid after March 15

Please make checks out to Concord Piecemakers and mail to Carol MacFarlane, 86 Kettle Hole Road, Bolton, MA 01740

Questions? Contact Carol. Please find email in our membership book.

Check out the killer projects for this class! You'll finish the apple in class and start on the pear. This raw edged appliqué technique is extremely accurate. Ellen's tricks for staying organized will ensure that your class time is efficient, productive, and free of frustration. You'll also learn tips for making your own DRA patterns. *Note: This class is for intermediate quilters. Participants must be familiar with free motion sewing. Kit fee.*

Maximum 20 students



ZoomBees 

Bargello ZoomBee Tuesday afternoons, 1:30 - 3:30

If you have questions about this ZoomBee, please contact president@concordpiecemakers.org.

We have just begun our Bargello quilts from Eileen Wright's book, *Twist-and-Turn Bargello*. It's not too late to join us. Just find 20 fabrics in your stash (depending on the pattern), and/or head to your nearest quilting store to fill in the blanks, and begin your strip sets. It's fun! And the results will be utterly stunning!

Thursday morning Sit and Sew ZoomBee, 10:00 - 12 noon

If you have questions about this ZoomBee, please contact president@concordpiecemakers.org.

Wednesday Evening Monthly Lone/Round Robin ZoomBee, 7 PM

If you have questions about this ZoomBee, please contact president@concordpiecemakers.org.

Bonnie Hunter Mystery ZoomBee, Fridays, 10AM - 12 noon

Elana Schreiber

Ready for another Mystery Quilt? Bonnie Hunter offers a freebie, Rhododendron Trail, with the first clue to be revealed on Friday, Nov. 26th. Let's work together on this project via Zoom. Beginning Friday, Dec. 3 join me each week for a two-hour ZoomBee to show and tell of your progress in the Bonnie Hunter's free Mystery Quilt. For more details check out Bonnie Hunter's blog at: <https://quiltville.blogspot.com/p/rhododendron-trail.html>

Guild Challenge

Elana Schreiber, Sally Duscha

We are making medallion quilts with prompts for the next border. You decide the colors, width, and size of the borders. Mystery prompts will guide your quilting adventure. Inspiration for these types of quilts can be found in traditional to modern quilters' work. Join us on the second Wednesday of the month on Zoom, but it would be really nice to see you, in person.

The first step is to find or make a no larger than 12-inch center. Do you have a UFO, appliqué block, Mariner's compass, panel, a group of small blocks that you intended for a "life time quilt" or perfect fabric that can't be cut? Voila you have your center.

Next decide whether you want to work alone--Lone Robin or in a small group-Round Robin. If you are a Lone Robin you work on your own quilt only with total control. If you are working in a group you are adding to someone else's quilt and then passing it on. There are surprises and new fabrics to work with along the way. To join as a Lone Robin or join a Round Robin group please, contact Elana Schreiber.

A prompt will be given each month we are meeting and you will use this idea to add a border to at least two sides of the quilt. For example, the prompt may be to include a particular shape, use a technique, or turn it on point.

If you are part of the Lone Robin you work on your own quilt with the ZoomBee or in person meeting, if possible, to support you.

If you are a member of a Round Robin group, you will pass the quilt and its fabric box to the same person, A, and receive from a different person, B, each month. As the quilts get passed around, you will add a border to each person in your group's quilt by the end of the challenge. You will only be making the center of your own quilt.

Prompts will be ready for November, January, February, April, and June. In June we will unveil our quilts. Is there a new quilt in your future? Join your quilting friends as we navigate the next part of the pandemic sewing together.



Quilt Show Announcement - CPM Quilt Show will be November 4-5, 2022

Our committee of five has been busy recruiting members to chair show functions. Everyone has been generous volunteering. We have the following openings:

White Gloves

Show clean up-putting the church back together

Quilt take down – folding and organizing to distribute

Quilt pick up

Cookie Sale

Books, Magazines, fabric

Books and magazines were sold out at the yard sale. Therefore, please go through your books and magazines to donate to the quilt show. We will also accept cotton quilt fabric: clean and unscented, ironed, and folded.

Labeled for yardage with blue painter's tape. No other type of fabric will be accepted.

Leadership of a function involves setting up a committee and/or co-chair to help you. Ask a friend or a new member to join you.

Here are some dates to help you organize for the show:

September 15, 2022 is the deadline for registering quilts.

November 3, 2022, Thursday, is set up for the show.

November 4, 5 2022 Quilt show

In an effort to save space and money on racks, we will only accept quilts measuring up to 95" or just under 8 feet wide and 95" long. Longer quilts will drape on a sheet.

We are hoping to have a fabric truck as a vendor. It looks more like a large bus and is very well-stocked.

Another change is our member hospitality kitchen. This will be completely pot luck except for beverages.

In March we will be getting our forms for registration, boutique, and other information. Please volunteer for a chair position and expect lots of help from our committee and members.

Gayle, Sally, Suzanne, Joy, and Barbara

Nickel Squares

Sally Duscha and Barbara Weiss

Please keep cutting squares and bring them to the next in person meeting. We need many more and varied types of cotton fabrics/colors. Accepting layer cake size-10" squares, 2 1/2" width of fabric strips as well as nickel squares-5" squares.



Comfort Quilts

Eileen Ryan

This is it! Crunch time! Our annual meeting to see what comfort quilts will be coming to the Quiltathon and we're ready for you!!



In addition to the usual activities of the Quiltathon, I will be setting up a pin basting station to baste quilts for machine quilting. If you'd like to try your hand at machine quilting, we'll baste your quilt for you. Or if you're a regular machine quilter, pick one or more out that you'd like us to baste while we have lots of room.

Rosie's Place

Katheen Mclsaac and Lola Chaisson

We would be happy to collect new toiletries for Rosie's Place at the Quiltathon. Thank you for all the donations at the Getaway!



Household Goods Sewing Kits

Suzanne Knight and Tina van Roggen

This is an ongoing project for making sewing kits for Household Goods in Acton. We are especially looking for scissors and tape measures right now.

But the following is the full list:

Sturdy containers (metal, plastic) with lids to hold the supplies, tape measures, scissors (particularly 6" or less, though all sizes are fine. (No pinking shears please), thread*** (any color, partial spools are fine), pins, safety pins, needles, and buttons that you are going to throw away. Also useful are very tiny boxes for pins, and bobbins or small embroidery floss cardboard organizers to wind thread on.

***Partial spools of thread - all types, colors are VERY welcome. Some of the thread only needs enough length to sew on a few buttons or make a hem. Please - no general crafting supplies, however. Contact Tina or Suzanne if you have any donations.

