



Concord Piecemakers' Grapevine May 2018

Susan Coulter, Editor

Wednesday, **May 16**, 7:15 pm
At Harvey Wheeler Center, West Concord, MA

President's Message Darlene Butler

Piecemakers' Calendar
2018

May 16 – Annual Meeting and
Pat Delaney

Jun 13 – Year-End Show and
Tell

*Things to bring to the
meeting:*

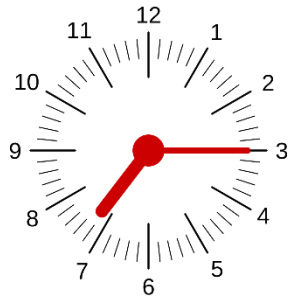
- ✓ **NAMETAGS**
- ✓ **Membership dues**
- ✓ **Nickel Squares**

May 2018 Message from the President

It's been a pleasure being your president this past year. Concord Piecemakers' has been a great institution to Concord and surrounding towns for over the past 30+ years. I feel proud to have been at the helm for 2017/2018. I've been lucky to have a smart and supportive board along with Suzanne Knight who has been an eager and attentive VP. Committee chairs and committee members have worked hard to give us a wonderful year of guild meetings and a beautiful quilt show this past Fall. All the behind the scenes members who seamlessly did their quilt show duties. Our two seasoned show chairs Joy Sussman and Barbara Weiss who hung the quilts like the pros that they are. Thank you to the members who come early to every meeting and set up chairs, get the library together, Set up and run membership, set up the sound system, take care of the speaker, lug countless bottles of toiletries for Rosie's Place. Thank you to the members who make comfort quilts at home and at the quiltathon. Thank you to everyone who keeps the community service projects going like comfort quilts, breast cancer heart pillows – drainage bag covers, ConKerr Cancer pillow cases and sewing kits for people getting back on their feet and restarting a new life and making a new home. It takes a lot of committed people to make an organization like CPM running and I am very thankful for them – they truly are what makes the difference.

Now there is a big accomplishment that I am very proud of this past year. In all honesty it was mostly through the dedicated work of our secretary Leslie Vieth. Leslie worked tirelessly on the CPM bylaws. Leslie would delete the outdated pieces of the bylaw, rewrite and clarify parts that are more fitting with our current day guild. She would give us all copies and we would go over the new bylaws at board meetings – sometimes changing some of the phrasing or finding a word that seemed a bit better. The board outdid themselves revising with Leslie over several meetings and emails. Next time you see Leslie, Suzanne Knight, Cassy Bosworth, Mary Jalenak, Sally Duscha and Carol MacFarlane give them a big thanks. Our new revised and scaled down bylaws are precise and easy to understand.

I would also like to let you all know we are changing things up a little for the May meeting. We have a business meeting like always but we have a speaker as well. At this meeting we will need to start right at 7:15 so that we can fit in our business meeting, show and tell and speaker. Normally it would be a time that the president would acknowledge and thank the board and all the committee chairs and committee members. Due to a tight schedule I will be doing this at the June members meeting. This meeting is the first meeting that our new president Suzanne Knight will be running. Suzanne has been gracious enough to let me steal a little time in June so that I can finish up the year properly by giving thanks to all of those who worked so hard and helped me have a successful year.



Membership *Cassy Bosworth*

The dues for the 2018-2019 year are expected to be submitted on or before the May 16 meeting. Our dues remain the same: Full membership is \$25 and Associate membership is \$15. You may download a registration form from the website concordpiecemakers.org or pick one up at the membership table.

All forms are due at the May meeting. As a special incentive, all members who rejoin by May 20 will be entered into a drawing to be held at the June meeting. The winner will receive a free membership.

Please be prompt as late submissions run the risk of being excluded from the Yearbook and make more work for the Membership chair during the summer.

Payment may also be made by sending your completed registration form and check to: Membership Chair c/o Concord Piecemakers PO Box 1381, Concord, MA 01742-1381.

Membership cards for the 2018-2019 calendar year will be available at the September meeting along with the latest yearbook. New name badges will be issued as needed and also be available at the September meeting.

May Meeting Vote - The board has discussed and added to the agenda for our annual meeting on May 16, increasing the dues for membership. The fee change will go from \$25 to \$30 for regular membership for the 2019-2020 membership year. Associate fee will not increase at the point, it will remain at \$15.



PROGRAM

Pat Delaney



Pat Delaney has come to our guild in the past but has new things to share this year. She is an award winning quilter, specializing in color, home machine quilting, appliqué, and embroidery. Her quilts have won Best of Show, Best Machine Quilting, Best Color, many blue ribbons in national shows, and her quilt "The Ancient Mariner at Sunrise" won Best of World in 2007.

Open Sew

There will be NO Open Sew in May. There will be Open Sew on June 2 and July 7.

Location: the Harvard Congregational Church, 5 Still River Road, Harvard, MA 01451.

Time: 9-3. Come for the whole time, or just part of it. Take the elevator to the second floor.

As a "thank you" to the Church for donating this space for us, please bring a non-perishable food item to be sent to Loaves and Fishes, our local food pantry.



Ruth Cappel

A former member, Ruth Cappel, passed away recently. Ruth has not been an active member for some time but some of our initial members such as Alice W. and Claudette C. remember Ruth fondly. I mention Ruth because her daughter Lynn was kind enough to contact me about donating her fabric and books in which we hope to use in our upcoming yard sale. It certainly makes us realize how long Concord Piecemakers has been around and that there are so many quilters before us that helped make us to what we are today.

Darlene



Hi all, Joan Kerpelman and I, Kitty Shaw, are coordinating this year's CPM yard sale. The date is October 13, 2018 at the same place, St Mathews in Acton.

We are now collecting. You can either bring your items in to our monthly quilt meetings or drop them off at St Mathews located at 435 Central St, Acton, MA 01720 on Thursday to Fridays by 12 PM only. You can leave the donations on the bottom floor, entrance at the back of the church. Please place items on the bench on the left side of the entrance as you enter.

If you need us to pick up a huge load, please email us and we can arrange to pick up your items.

So, please look through your stash and de-clutter your storage space to allow for new fabrics you have been drooling over. We can sure use anything you can give us for the yard sale. And please measure your donated fabrics by quarter yard denominations. This would help us tremendously in sorting fabrics by yardage.

Thank you in advance for your donations.

Nickel Squares Barbara Weiss

I am collecting nickel squares at each meeting. There will be a labeled basket on the side tables. For those of you who are new to quilting, a nickel square or charm is a five inch square.

CPM sells packs of 100 squares at the quilt show. It is a very easy way to "buy a quilt" all ready to sew. There are books in our library devoted to this size.

Please submit squares which are made of current fabric, clean of threads, washed fabric(unscented detergent), and accurately cut. We need multiples of background fabric, colorways of red, green etc. All types of quilting fabric are useful.



Member Fabric Sale

At our **June** meeting we will have a members Fabric Sale.

This is a chance to sort through your stacks of fabric and make way for new purchases. Measure the fabric, set a price and put labels on each length. Blue painter's tape is the best and leaves no residue.

As Marie Kondo has said, "If it does not give you joy, then do not keep it." For us, someone else will want it and use it. Then you can see it in their quilts.

Tables will be set up at the back of the room. Plan on no more than half of a table. You may wish to donate leftover fabric to the yard sale, which takes place in October. Please let me know if you want to participate.

Barbara Weiss



Comfort Quilts Linda Merwin

“To all the busy hands at Concord Piecemakers, I received a beautiful quilt on my first visit to the Oncology department at Emerson hospital. I was so surprised and pleased with your kindness. You made that day less scary for me. I will take good care of it.”

We have an active quilt giving program at Emerson hospital for those receiving chemo treatments. Our own SuzAnne Weisenbloom collects the quilts from me and then beautifully presents them, each in their own bag with a tag from Concord Piecemakers. Because of each of you donating your time, talent, and fabric, we are able to provide men and women like the person quoted above with a beautiful, comforting quilt. Thank you!

We also donated two children’s quilts this past month to a family who lost everything in a house fire. I have their permission to share with you their pictures and the delight on these children’s faces to have a quilt that brightens their new temporary housing.

Linda Merwin, Comfort Quilt Coordinator

