



Concord Piecemakers' Grapevine April 2018

Susan Coulter, Editor

Wednesday, April 18, 7:15 pm
At Harvey Wheeler Center, West Concord, MA

President's Message Darlene Butler

Piecemakers' Calendar
2018

Apr 18 – Diane Beaman

Apr 19 – Workshop

May 16 – Annual Meeting

Jun 13 – Year-End Show and
Tell

*Things to bring to the
meeting:*

- ✓ **NAMETAGS**
- ✓ **Raffle Quilt Blocks**
- ✓ **Nickel Squares**

April 2018 Message from the President

It's Springtime in New England and like always you will never know what's around the corner as far as weather! This Spring has been an exceptional one as far as snow and rain or cloudy skies. Hopefully by the time this message gets to you we will have had a few sunny warm days.

At the last board meeting we talked about several things but the one that hit home with me and I would like to share with all of you is being a more inclusive membership. I heard a few stories around the table about how members felt when they were new to C.P.M. Sadly they either felt invisible or somewhat ignored. I can remember feeling like I was in a sea of people I didn't know but also uncomfortable. Every time I made eye contact I could feel the awkwardness that I felt but also the awkwardness of the person looking back at me – quickly both of us darting our eyes and glancing away. That was at least 10 years ago! I can tell you the New Members dinner helped a lot but then at the meetings things slowly drifted away and I would feel out of place again. Now I do not think the Concord Quiltmakers is a group of self-centered people. In fact I feel the opposite but it took some time. I know it is human nature to go to any meeting of any sort and be excited about seeing friends or looking forward to a new speaker. I mean this – we need to look around and see if there are any new faces in the crowd and introduce ourselves. You could introduce yourself to a new person let them know what you are most interested in as far

as quilts. Ask them what they like, how they heard about Concord Piecemakers. If someone is wearing an interesting jacket or has a book from the library you can use that as an icebreaker. Some members may not be brand new faces but ones you have seen around a year or two. These members are still new members! Even longer if they haven't made any connections with other members. Now with that said I would like to add some words of wisdom. I know it's hard for new members to put themselves out there as well. For myself I have always had to have an internal discussion with myself to try to meet people when I'm in a new situation. No easy task but when I do I'm usually greeted with a smile and some light conversation. It may take some time but eventually you meet more and more members.

On this very same subject we have a member, Beth Dorfman, who has been with C.P.M. about 3 years, and she has generously offered to start a refreshment gathering spot for us to have a little something and talk to each other. This is still a work in progress but Beth will have an article in this same newsletter to explain what she plans to do and how you can help.

Another topic that seems to come up at board meetings is the need to have the membership as a whole participate in the guild's yearly workings. Most people could sign up to sell raffle tickets at different events during the months it is displayed. I know it can be scary to commit to some of the positions but truthfully I've gained a lot. As you all know I am not the smoothest public speaker but I am not as nervous as I once was and I have gotten a little better. I've made a lot of good friends through the years. To have friends that like the same things you like, often like minded and usually get to see once a month (without having to clean the house) is a treat. Please consider a job in the future when you hear something come up. We have a great guild but it can't exist unless we all do our part...

Darlene

Membership *Cassy Bosworth*

It's that time of year, Spring, a time of renewal, the flowers return and so does our membership drive. Registration sheets will be on the membership table for you to fill out. Next fall is the Yard Sale and a packed schedule of speakers thanks to the hard work of Carol and our Program Chairs. Register by May 16th and you will be entered in the raffle for free membership.

Please make sure to update any address or email changes for the new yearbook.

Registration can be found on the Concord Piecemakes website under Becoming a Member.



PROGRAM



Diane Beaman – Sew Many Threads: Lecture & Trunk Show.

Learn about various kinds of thread, how to select the right thread for an application, and get some tips on eliminating frustration with those fussy decorative threads. My trunk show quilts will inspire you to use all kinds thread from matte finish, to shiny, to sparkly. Find out more on my website <https://sewmanythreads.wordpress.com>.



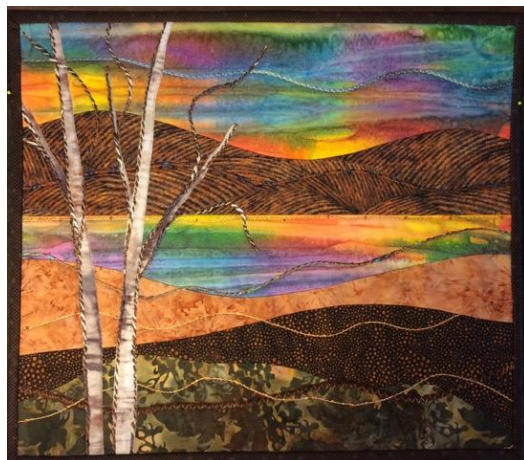
ALSO...

April 19th, 2018, Thursday Workshop, by Diane Beaman

Branching Out is a small landscape class that does not rely on a pattern or strict photorealism. Instead, fabric selection creates a mood, curved piecing provides the background, couching yarns add movement and interest, and the lines of a tree appliqué provide focus and detail. The joy comes with making the landscape unique and personal. Diane guides people through each technique (curved piecing, couching, no-reverse appliqué) but still allows for a lot of choice and creativity. She has a large stash of couching yarns which will be available for student use. It is so much fun to select the perfect yarns for your background or for highlighting the edges of your tree. Diane has taught this class to all levels of quilters with much success.

Location: St. John's Evangelical Lutheran Church, Great Road, Sudbury

Time: 9 AM to 3 PM



NEW THIS MONTH.....



A fun addition while socializing, looking through library books, and checking out the tables to see what else is happening in the guild. If you wish to bring something requiring no utensils, please do so...

There will be a money jar set up on the table for donations so we can continue this at each of our monthly meetings.

I am the only one currently hosting this and am looking for a volunteer to back me up if I don't attend a meeting. You can email me at idecorate@comcast.net. The preparation for each meeting is very, very simple. No calls, no emails.

See you soon :)
Beth

RAFFLE QUILT BLOCKS

Thank you to everyone who took a raffle quilt block kit at the March CPM Meeting!

Please remember to bring your completed blocks to the April Meeting.



Special Guest Speaker—Your Vote!

As you probably know, Concord Piecemakers received an anonymous gift of \$1000, which the Board decided should be used to bring in a Special Guest Speaker. The Program Committee was asked to select three top contenders for our Special Guest Speaker from a list that was generated by you, our members. We present below a list of our top three. It is now up to you to make the final decision. The membership will vote on this at our April 18th meeting.

In the meantime, check out the three websites (provided below) to best access their appeal to you personally. At our meeting, you will receive a written ballot and will be asked to number them in order of preference. The winner of the vote will be contacted and invited to come during the 2019-2020 year. If we do not receive a timely response or they are unavailable, we will contact the second person on our list. They are all wonderful, so it is a “win” no matter who ends up being our Special Guest. We will also have our special guest present a workshop, which the Program Committee will select, on the following day (a Thursday).

If you will not be at the April 18th guild meeting and would like to vote, you may contact me via e-mail with your choices in order of preference. Please, everyone, do your homework by checking out all the websites below. Thank you.

Gyleen Fitzgerald <https://www.colourfulstitches.com>

Anna Maria Horner www.annamariahorner.com

Ann Shaw <https://annshawquilting.com>

-Carol MacFarlane, Program Committee Chair



Nickel Squares Barbara Weiss

I am collecting nickel squares at each meeting. There will be a labeled basket on the side tables. For those of you who are new to quilting, a nickel square or charm is a five inch square.

CPM sells packs of 100 squares at the quilt show. It is a very easy way to “buy a quilt” all ready to sew. There are books in our library devoted to this size.

Please submit squares which are made of current fabric, clean of threads, washed fabric(unscented detergent), and accurately cut. We need multiples of background fabric, colorways of red, blue, purple, green etc. All types of quilting fabric are useful.



Member Fabric Sale

At our **June** meeting we will have a members Fabric Sale.

This is a chance to sort through your stacks of fabric and make way for new purchases. Measure the fabric, set a price and put labels on each length. Blue painter's tape is the best and leaves no residue.

As Marie Kondo has said, “If it does not give you joy, then do not keep it.” For us, someone else will want it and use it. Then you can see it in their quilts.

Tables will be set up at the back of the room. Plan on no more than half of a table. You may wish to donate leftover fabric to the yard sale, which takes place in October. Please let me know if you want to participate.

Barbara Weiss





ROSIE'S PLACE

www.rosiesplace.org

At Rosie's Place, they always smile when I tell them our donations are mostly toiletries. Especially because they make up packets for their outreach van, there is always a need for shampoo, conditioner, toothpaste, toothbrushes, soap, deodorant, lip balm, lotion, **socks, washcloths and pillowcases**! With the sun reappearing, **sunscreen** is also needed!

Thank you for all your generous donations. Storage issues have eased, so Rosie's Place is again able to accept **some current season** clothing. If you want to think ahead, for our last collection of the year, I would like to gather fresh school supplies that can be delivered in time to prepare for back to school.

Lola and Kathleen

Comfort Quilts

"On behalf of my friend, Paula, I want to thank Concord Piecemakers for the cheery, colorful, enveloping comfort quilt....Paula just started treatment for breast cancer and I know that your thoughtfulness and generosity is bringing her great peacefulness."

This is just one of many thank you notes we receive from the recipients of our comfort quilts. The quilts truly give a boost to those who are encountering a challenging time in their lives. Time and again recipients of our quilts express their gratefulness and wonder that someone would actually make a quilt just for them.

In 2017 we donated quilts to many organizations, including the Bethke Cancer Center at Emerson Hospital, Camp Erin - a children's bereavement camp, Bedford VA Hospital, Rosie's Place, and Habitat for Humanity in Lawrence.

Many of you ask, what size quilt should I make? By far, the most needed size is a lap or throw size quilt. These measure roughly 48" x 60". Small variations (2 - 4 inches in either direction) from this size are fine. Also, specifically for Bedford VA Hospital we can use more quilts for men in either a wheelchair size (36" x 45") or lap size as defined above.

Thanks to all of you our comfort quilt program is alive and well! A hearty thank you to each of you who contribute your time and talent to our comfort quilt program.

Linda Merwin, Comfort Quilt Coordinator!

Nominations 2018-2019

President – Suzanne Knight

Vice President – Carol MacFarlane

Treasurer – Mary Jalenak

Secretary – Leslie Vieth

Historian – Sally Duscha

Membership – Co-Chairs – Robin DeMott, Moira Ten-Hove

Yearbook – Robin DeMott

Program – Co-Chairs, Elana Schreiber, Cassy Bosworth

Library – Judy Jacobsche, Sharon Perko

Publicity – Co-Chairs Eileen Ryan, Joan Kerpelman

Communications

Newsletter – Susan Coulter

Website – Tina vanRoggen

Fundraising

Yard Sale – Co-Chairs – Kitty Shaw, Joan Kerpelman

Quilt Show – Co-Chairs – Pam Cincotta, Kathie Becker

Leslie Lowe, TBD

Outreach

Comfort Quilts – Linda Merwin

Mentors – Claudette Cavalier, Alice Wiggin,

Joy Sussman, Martha Supnik

Rosie's Place – Kathleen McIsaac, Lola Chaisson

Quilt Museum – Martha Supnik

Quiltathon – Co-Chairs – Marla Richmond, Cassy Bosworth

Getaway Weekend – Marian Bressel

Nominating – To Be Appointed from Membership

Submitted by Pam Cincotta and Barbara Weiss