



Concord Piecemakers' Grapevine March 2018

Susan Coulter, Editor

Wednesday, **March 21**, 7:15 pm
At Harvey Wheeler Center, West Concord, MA

President's Message Darlene Butler

March 2018 Message from the President

Piecemakers' Calendar
2018

Mar 21 –Carol Anne Grotrian

Apr 18 – Diane Beaman

Apr 19 – Workshop

May 16 – Annual Meeting

Jun 13 – Year-End Show
and Tell

*Things to bring to the
meeting:*

- ✓ **NAMETAGS**
- ✓ **Pillowcases**
- ✓ **Nickel Squares**

Well another February and another Valentine's day, cold weather and another great Quiltathon! As usual there was a wonderful turnout for the annual Quiltathon at Saint Matthews. I think to myself about how dedicated the majority of members from CPM are! Easily people could say naw I'm not going it's too cold out, Saturdays are my sleep In day from working all week or someone else will go – no one will miss one more body! That's what's special about this group, members do care about others... both the recipients getting the quilt and their friends that they make those quilts with. Having fun getting caught up with each other and enjoying the food that has been brought in is all a part of the fun. I think the Quiltathon represents a lot of what Concord Piecemakers stand for; helping others, friendships and quality workmanship.

I need to give a special thanks to Marla Richmond for doing this event every year for many years. Marla does love to do this but she has very nicely expressed she wouldn't mind having another person help her out for future Quiltathons. Marla has this figured out to a tee and there really wouldn't be much on that side to do. She could use help with the logistics each year,

booking the church, getting the batting from point A to point B, having Roach Bros. deliver the sandwiches and all the little things associated with getting these beautiful quilt tops transformed into completed quilts. This is a great job for someone who would like to help the guild and have a clear defined job with a beginning and an end.

Another great CPM tradition is the October Yard sale! I know it sounds early to talk about this but it's a great time to start going through all your quilt, needle art and general craft stuff and clean house. Yes you can make your sewing area a lot tidier, make money for the guild and have your old stuff be loved

and appreciated by a new someone. There will be a place at Saint Mathews to store the yard sale stuff but our YS chairs are thinking of a way to do this with as little disruption to the church staff as possible. Stay tuned this information will be coming soon.

One more yard sale thought. October is the month we have the sale but the weeks leading up to the sale is when the sorting starts. We do this several days a week for a couple of weeks usually in the morning and of course the big sale is on a Saturday. This too is another way to volunteer and have it be a finite amount of time. You can sort as many days as you like and or help the day of the sale or any combination or the two. This is a lot of fun and boy do you get to know each other! Lots of funny stories have been told on sorting days.

As I end this message I'd like to say with all this stressful snow we've had I hope everyone got a little of something they love to do. Binge watching their favorite show(s), eating something that we absolute love but shouldn't eat and of course some kind of needle work that helps us relax. Spring is coming and I know we all can't wait.

Darlene

PROGRAM



March 21, 2018: Carol Anne Grotrian

Quilts with a View: New Landscape Traditions

American artists, including needle workers have naturally turned to the land for inspiration. This lecture touches on the appearance of landscape in antique quilts, looks at the diverse views and viewpoints of contemporary quilters and, on a personal note, includes a few of the artist's landscape quilts among projected images and in person.



**"When the Moons Come Over the Mountains"
by Carol Anne Grotrian**



APRIL WORKSHOP!

Thursday, April 19th

Branching Out Workshop with Diane Beaman

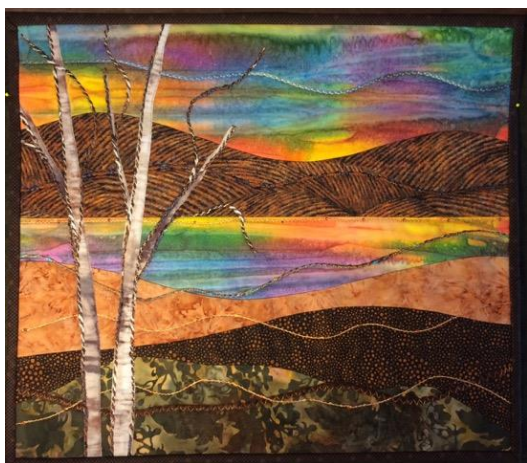
"Branching Out" is a small landscape class that does not rely on a pattern or strict photorealism. Instead, fabric selection creates a mood, curved piecing provides the background, couching yarns add movement and interest, and the lines of a tree appliqué provide focus and detail. The joy comes with making the landscape unique and personal. Diane guides people through each technique (curved piecing, couching, no-reverse appliqué) but still allows for a lot of choice and creativity. She has a large stash of couching yarns which will be available for student use. It is so much fun to select the perfect yarns for your background or for highlighting the edges of your tree. Diane has taught this class to all levels of quilters with much success. The supply list gives some guidance on fabric selection, but there will be help with selections at the beginning of class. Diane will also have tips for adding some free motion quilting or using decorative threads but these steps are not required to complete the project.

Location: St. John's Evangelical Lutheran Church, Great Road, Sudbury
Time: 9 AM to 3 PM

Fee: \$45 (Make checks out to Concord Piecemakers with "workshop" in the memo line.)

EARLY BIRD DISCOUNT: \$40 Get your check to Carol MacFarlane by Wed., March 21st for this great discount.

We will open this class to other guild on March 22, so register now!



RAFFLE QUILT Mary Jalenak

Thank you to all who voted on the design for the raffle quilt. The clear winner was Hattie's Dream. Kits for foundation piecing of the blocks will be available at the March meeting. Please stop by the table and take a kit or two. (Completed kits will be collected at the April meeting.)



Nickel Squares Barbara Weiss

We are starting up again collecting 5" squares. All types of fabric are needed. Please make sure that fabric you cut up is relatively current. Previous packs of fabrics which are left over from the quilt show will be offered at half price at meetings.



Member Fabric Sale Barbara Weiss

At the JUNE meeting members will be able to sell fabric from their stash. Each member will have a portion of a table to set up fabric. Set your own price and label the yardage. After the sale, you might want to donate leftover fabric to the yard sale, which takes place in October.

So start going through your fabric and decide what fabric you want to sell. As Marie Kondo explains, handle each piece and if it does not give you joy, then it is time to part with it.

Please email me if you intend to participate in the sale.



CPM Open Sew @ Harvard Congregational Church Sue Colwell

April 7 is the upcoming Open Sew Day at the Harvard Congregational Church, 5 Still River Road, Harvard, MA 01451.

Time: 9-3. Come for the whole time, or just part of it.

As a "thank you" to the Church for donating this space for us, please bring a non-perishable food item to be sent to Loaves and Fishes, our local food pantry.

