



Concord Piecemakers' Grapevine December 2017

Susan Coulter, Editor

Wednesday, **December 13**, 7:15 pm
At Harvey Wheeler Center, West Concord, MA

President's Message Darlene Butler

December 2017 Message from the President

Piecemakers' Calendar 2017-2018

Dec 13 - Holiday Party
Jan 17 - Arlan & Pat Christ
Feb 24 - Quiltathon
Mar 21 - Carol Anne Grotrian
Apr 18 - Diane Beaman
Apr 19 - Workshop
May 16 - Annual Meeting
Jun 13 - Year-End Show
and Tell

Things to bring to the meeting:

- ✓ **NAMETAGS**
- ✓ **Pillowcases**
- ✓ **String Blocks**
- ✓ **Non-perishable
food donation for
Open Table.**
- ✓ **3 TOT fat quarters
for Holiday game**

So here we are....it's December already! I don't know about the rest of you but every year I scrambled to get through Thanksgiving. Figuring out the menu and who will bring what for the dinner. Cleaning the house—the absolute worst thing on my to do list! Then BAM! December is here and we look forward to celebrating with friends and family and avoid all discussions about religion and politics! At least in my family it's a good policy!

Time to think of others less fortunate than ourselves and just how life even though not perfect is for the most part pretty good. I know that CPM guild members are very generous and thoughtful all year round so many of you are making quilt tops or volunteering in other ways. When I first joined the guild I can remember how impressed I was (and still am) with the craftsmanship, quality and quantity of quilts that are made by our members. This is a good time to think of putting together a quilt top if you haven't already or make some string squares, ConKerr Cancer Pillow Cases or Breast Cancer Heart Pillows and Drainage Bag Covers. All the directions for these items are on the website.

December also brings to mind that the annual January Getaway that takes place over the Martin Luther King Jr. holiday weekend is not far off. If you are a new member this is a fun weekend of sewing, eating and lots of laughing with fellow guild members. You can go for a day which is a sit and sew or stay over for one, two or three nights. It's one the best ways to meet other members. This is also the time that the raffle quilt that will be raffled off at the 2019 quilt show is decided. Members can bring their quilt top ideas and from there the patterns get looked over as a group. After much discussion there are favorites that get whittled down to final choice! There may still be a chance to sign up. Contact Marian Bressle if you are interested she will let you know.

Our meeting this month is our annual holiday celebration and we will have great food (that you don't have to make or clean up any dishes) and a game that includes fabric prizes! You can't beat those 2 combinations! Three fat quarters of tone on tone fabric are what we will be using. The hot food, green salads and drinks will be there and if you like you can bring a desert.

So as the once children in my family are either young adults or a little older I think I will try to have a less commercial holiday season this year. Make more gifts, just small ones spend more time with people I don't always get enough time throughout the year be it a lunch date or just a walk and coffee out. I hope all of you can treat yourselves to these little but important snippets of time.

See you at the party! Darlene



Attention: Drivers needed

Drivers needed for Food Donations that will be acquired the night of the December meeting!

Any members that can have their cars loaded with donated food items and drive them to Open Table the next morning it would be greatly appreciated if you could contact Suzanne Knight or Darlene Butler. Not sure how many cars/SUVs will be needed. We can determine that the night of the meeting. We will have a standby list so please if there are many offers.

Thank You Darlene and Suzanne

News for the Holiday Meeting on December 13th:

We will once again ask for donations of non-perishable food items for **Open Table** (<http://www.opentable.org>) at our December 13th meeting. This year we need to drop off our entire donation at [105 Everett St \(Concord\)](#) the next morning - Dec 14th. Is there a member or two with a larger car who would be willing to keep our donations overnight and then deliver them to the pantry in Concord? If you are willing to do this, please contact Suzanne Knight (suzanneknight1@gmail.com).

The Board is planning an "activity" involving fabric this year at the celebration. Please bring **3** (three) fat quarters of **tone on tone** fabric - any color. Don't dig deep into your old fabrics for this, but find something new and interesting. Start shopping now (and don't forget to shop for yourself as well because your stash deserves a little attention). If you don't know what tone on tone means, ask at the meeting or look at the pictures included with the newsletter - remember - any colors are fine.

Still not sure what tone-on-tone means? Read the definition below from <https://www.thespruce.com/tone-on-tone-fabrics-for-quilt-depth-2821648> :

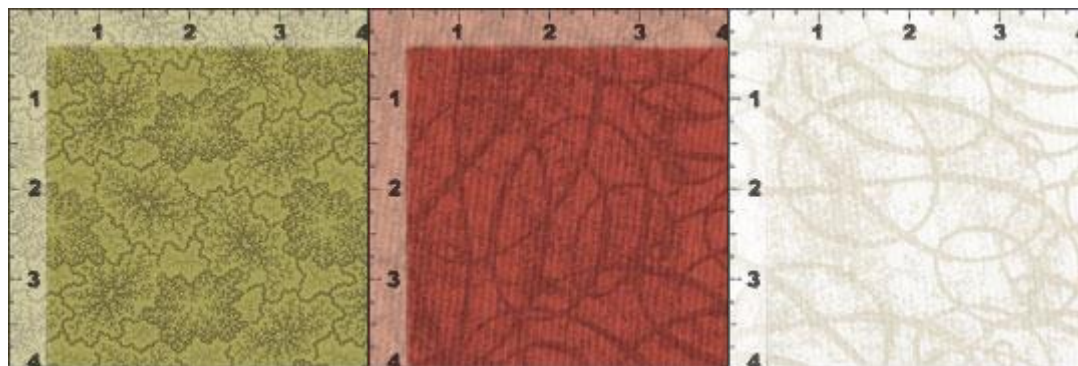
What Are Tone on Tone Fabrics?

The term tone on tone fabric, often shortened to either ToT or TOT, refers to printed fabrics that are designed by combining different shades and tones of one color. Tone on tone fabrics often appear to be solid colors when viewed from a distance, but their printed motifs become visible when inspected more closely.

Tone on tone fabrics are an important part of a quilter's fabric collection because they add subtle, visual texture and depth to a quilt without overpowering the quilt with heavily printed fabrics that compete with other for attention. Think of ToT fabrics as a quiet place for the vision to 'rest.'

Nearly all quilting fabric manufacturers offer tone on tone fabrics that work with both their own collections and with others.

Tone-on-tone fabrics serve the same purpose as solid fabrics but do not appear as flat.



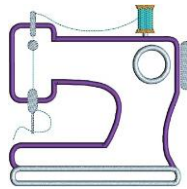
CPM Open Sew @ Harvard Congregational Church Sue Colwell

Saturday, December 2nd is the next Open Sew Day at the Harvard Congregational Church, 5 Still River Road, Harvard, MA 01451.

Time: 9-3. Come for the whole time, or just part of it.

As a "thank you" to the Church for donating this space for us, please bring a non-perishable food item to be sent to Loaves and Fishes, our local food pantry.

The UFO group will have an informal Meeting at the Open Sew @ noon.



ROSIE'S PLACE

www.rosiesplace.org

Space at Rosie's Place

Happy Holiday's to our friend's at Rosie's Place. Renovations are still going on so they are requesting warm clothes for the winter, and toiletries, and special gifts for the holidays. They cannot store much else.

http://www.rosiesplace.org/give/other_ways_to_give/donated_items_and_drives..

With all the giving going on this month, we are proud to do what we can do. Bring whatever you can to our next meeting; coats, gloves, scarves, toiletries, gift card, and loving thoughts. All will be accepted with joy and gratitude during this season.

Kathleen McIsaac and Lola Chaisson

COMFORT QUILTS Nancy Maldari

In this season of giving I am lucky enough to represent you in giving our lovely variety of quilts to so many thankful, special people.

Lately there have been questions about what size a quilt should be.

Between Eleanor Burns and some recipients, here are the sizes requested, and, of course, if your quilt ends up being close to these dimensions, that's okay.

These are the sizes most requested:

-LAP ROBES - 48X62

-TWINS - 70X96

-DOUBLES/QUEEN COVERLETS - 82X108

Some of our 'clients' request specific sizes, and they are -BETHKE CANCER CENTER likes them to be 50X70 - HABITAT FOR HUMANITY IN LAWRENCE prefers the "twin" size (70x96) -LARGER QUILTS ARE NEEDED FOR RAFFLES and CHILDREN'S QUILTS -- A VARIETY OF SIZES. Just remember YOU may ask for a quilt for someone or a group you know who will appreciate such a gift.



Conkerr Cancer Pillowcases Maura Cain

Thirty four pillowcases were delivered to Boston Area Hospitals. We can't get enough bright, cheery pillowcases, they help children and families cope with the traumatic stress of illness. Thank you to the members who continue to make and donate them. If you've never made one and have questions, please contact me.



*Giving Sick Kids a reason to smile
...one pillowcase at a time.*