



Concord Piecemakers' Grapevine November 2017

Susan Coulter, Editor

Wednesday, **November 15**, 7:15 pm
At Harvey Wheeler Center, West Concord, MA

President's Message Darlene Butler

November 2017 Message from the President

Piecemakers' Calendar 2017-2018

Nov 15 – Marge Tucker
Dec 13 – Holiday Party
Jan 17 – Arlan & Pat Christ
Feb 24 – Quiltathon
Mar 21 – Carol Anne Grotrian
Apr 18 – Diane Beaman
Apr 19 – Workshop
May 16 – Annual Meeting
Jun 13 – Year-End Show
and Tell

Things to bring to the meeting:

- ✓ **NAMETAGS**
- ✓ **Pillowcases**
- ✓ **String Blocks**
- ✓ **Library Books**
- ✓ **Show & Tell**

It's officially "the holidays" at least that's how I feel once the calendar page turns to November. Just like in your personal lives we have lots going on in November and December for the Concord Piecemakers members!

One big and very nice surprise for all C.P.M. members is a gift of 1,000 dollars that has been given to us anonymously. The board and myself have been thinking in what way can we use this special gift so that all the members of the guild get to enjoy it. It took a while and we thought what about a speaker that was a little more money than we are used to paying? Someone special and who better than to come up with suggestions? The membership! Carol MacFarlane, the programs chair, will accept suggestions from anyone who would like to give her one and along with her programs group will research out speakers that are feasible. It'll be fun to see if we can come up with a speaker/teacher that we never thought we could have due to cost of flight expenses to come to our guild and wow us with their quilts!

Now on a more serious note we need to talk about the biennial raffle quilt that we raffle off at our quilt show. The amount of work to make one of these beautiful bed quilts is huge, which we all know too well because we are all quilters! We are so lucky that Marian Bressle helps coordinate the design and color palette along with giving the guild at-cost price for the fabric. Mary Jalenak and others ponder over the fabric choices and design and then figure out and cut a gazillion block kits for members to machine piece.

Once pieced by one or two of the block kit ladies it is sent off to our own Laurie LaConte to machine quilt one her masterful designs on!

That alone is pretty amazing but like most things in life there is another component, a behind the scenes portion that we don't always think about. In the case of the raffle quilt it is the marketing and booking of venues to display the quilt and sell raffle tickets. A person who organizes these raffle quilt ticket sales for quilt shows, fairs, celebrations or any event that we think we could sell tickets at. In order to keep the raffle quilt as part of our ongoing legacy we need one or two members to come forward at the November meeting and volunteer for this position(s). If you have a friend that may want to do this with you or think you are up for this challenge by yourself please talk to me. I will ask at the November meeting unless someone would like to approach me ahead time. The reason this issue is time sensitive is because we have in the past planned the quilt at the January Getaway. In order to have the time to plan this we need to start planning now.

Lastly a reminder that next month is December and we will be having our holiday party and hopefully many of you will be able to make it. We will be having a delicious dinner, a fun game that includes fabric and of course some sweets provided by our very talented members. And remember we will start having Show & Tell after the door prize but before the Speaker.

See you soon,
Darlene





Programs

November 15th – Marge Tucker "Trunk Show"

Marjorie Tucker is an award-winning quilt designer and quilting instructor recently relocated to the greater Boston area

Marjorie considers herself an eclectic quilter. "I like it all! I started with traditional pieced quilts, dabbled in applique and now am enjoying the liberated style of piecing that is taught by Gwen Marston. My first workshop with Gwen was a revelation!" Marjorie has embraced and focused on this style of abstract quilting and design for the past several years.



"Urban Cabin"
21.5" x 26"
2016

News for the Holiday Meeting on December 13th:

We will once again ask for donations of non-perishable food items for **Open Table** (<http://www.opentable.org>) at our December 13th meeting. This year we need to drop off our entire donation at [105 Everett St \(Concord\)](#) the next morning - Dec 14th. Is there a member or two with a larger car who would be willing to keep our donations overnight and then deliver them to the pantry in Concord? If you are willing to do this, please contact Suzanne Knight (suzanneknight1@gmail.com).

The Board is planning an "activity" involving fabric this year at the celebration. Please bring **3** (three) fat quarters of **tone on tone** fabric - any color. Don't dig deep into your old fabrics for this, but find something new and interesting. Start shopping now (and don't forget to shop for yourself as well because your stash deserves a little attention). If you don't know what tone on tone means, ask at the meeting or look at the pictures included with the newsletter - remember - any colors are fine.

Still not sure what tone-on-tone means? Read the definition below from <https://www.thespruce.com/tone-on-tone-fabrics-for-quilt-depth-2821648> :

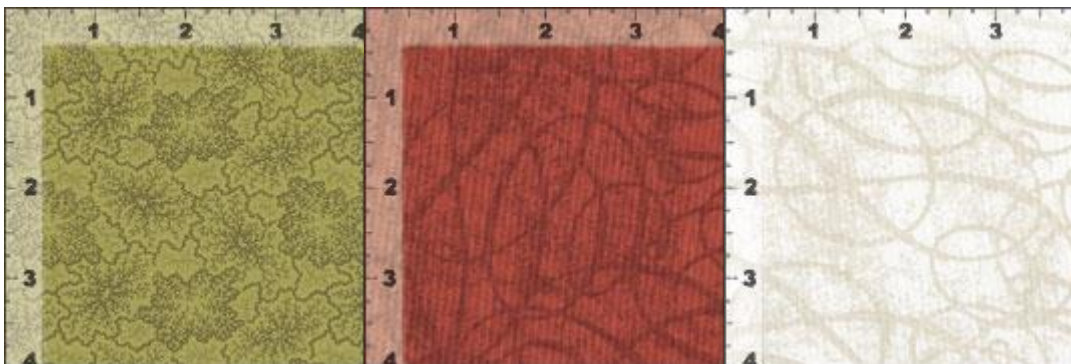
What Are Tone on Tone Fabrics?

The term tone on tone fabric, often shortened to either ToT or TOT, refers to printed fabrics that are designed by combining different shades and tones of one color. Tone on tone fabrics often appear to be solid colors when viewed from a distance, but their printed motifs become visible when inspected more closely.

Tone on tone fabrics are an important part of a quilter's fabric collection because they add subtle, visual texture and depth to a quilt without overpowering the quilt with heavily printed fabrics that compete with other for attention. Think of ToT fabrics as a quiet place for the vision to 'rest.'

Nearly all quilting fabric manufacturers offer tone on tone fabrics that work with both their own collections and with others.

Tone-on-tone fabrics serve the same purpose as solid fabrics but do not appear as flat.



Membership *Cassy Bosworth*

October brought in our newest member Mary Cornett. Please take a moment to welcome her. If you are in need of a replacement name tag email your request to membership@concordpiecemakers.org and you can pick it up at the membership table at our next meeting.

Remember your name tag so you can participate in the drawing for a free gift at each meeting.

Publicity Chair Needed

by Pam Cincotta (Nominating Chair)

For years our guild's publicity has been handled beautifully by Barbara Tarlow. Barbara is ready to mentor someone to take over this role. The publicity regarding our 2 main fundraisers, the Yardsale and the Biennial Quilt Show, are the main responsibilities of this role which includes advertising, brochures, posters and generally getting the word out about our events. If you feel you would like to assist our guild in this important role, please contact Pam Cincotta (Nominations Chair) or Barbara Tarlow (Publicity) who can answer any questions you may have. The next event requiring publicity is our 2018 Yardsale.



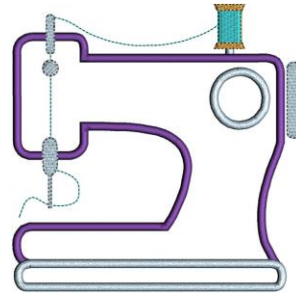
CPM Open Sew @ Harvard Congregational Church Sue Colwell

Saturday, December 2nd is the next Open Sew Day at the Harvard Congregational Church.

Time: 9-3. Come for the whole time, or just part of it.

As a "thank you" to the Church for donating this space for us, please bring a non-perishable food item to be sent to Loaves and Fishes, our local food pantry.

The UFO group will have an informal Meeting at the Open Sew @ noon.



Happy
Thanksgiving

A Thanksgiving-themed illustration featuring a cornucopia overflowing with various autumnal items. It includes pumpkins, gourds, apples, and clusters of grapes, all rendered in warm, seasonal colors.