



Susan Coulter, Editor

Concord Piecemakers' Grapevine September 2016

Wednesday, September 21, 7:15 pm
At Harvey Wheeler Center, West Concord, MA

Piecemakers' Calendar
2016-2017

Sept 21 - Timna Tarr
Oct 19 - Kathie Beltz
Oct 22 - Hunter's Star Workshop
Nov 16 - Amy Friend
Dec 14 - Holiday Party

President's Message Pam C.

September 2016 Message from the President

Welcome back everyone to the beginning of another wonderful, creative year as a Concord Piecemaker. I'm hoping you all enjoyed your summer and are ready for our guild activities to begin. While guild business has been kept to a minimum this summer there are several members who have continued to work toward making our guild year a success.

Things to bring to the meeting:

✓ **NICKEL SQUARES**

Thank you Cassy for your work in collecting those late membership renewals, handwriting our new membership cards, and compiling/printing our 2016-2017 Yearbook. As in the past, please safeguard our member's contact information by shredding your old yearbook.

Thank you Sue Lee, Kitty Shaw, Cindy Lee Gee, and all our donating and sorting volunteers who have been working to ensure we have another successful Yard Sale.

Also, thank you to Barbara Tarlow for getting the word out to as many people and organizations as possible regarding the date and time of this Yard Sale. This is our big fundraising event for the year so be sure to take time to look through your sewing rooms and storage bins for items and fabric that you are ready to part with.

Thank you to Tina Van Roggen for the many updates she has made to our CPM website.

Thank you to the ladies of the Programs Committee: Barbara Kozenko, Linda Merwin, Polina Shapiro, Elana Schreiber, and our chairman, Cheryl Dennis. This guild year is close to being completely booked and I'm sure all of you will get enjoyment and inspiration from the speakers and workshops planned.

Thank you to Martha Supnik who has continued keeping us apprised of local quilt shows and NEQM happenings.

Thank you to Mary Jalenak who has been working tirelessly to put our lovely raffle quilt together and thank you to Laurie LaConte who has graciously agreed, once again, to quilt our raffle quilt.

Thank you to Nancy Maldari for continuing to support local charities with quilts from our comfort quilt stash. And thank you to all who continued working on comfort quilts during the summer months.

Thank you to our CPM board members who have already met for the first time this season and continue their work as representatives of our guild; Darlene Butler, Mary Jalenak, Leslie Vieth, Susan Coulter, Sally Duscha and Nancy Maldari.

Lastly I want to remind our members, that as of this time, we do not have co-chairs for the 2017 Quilt Show. A mass blast was sent out in August to all of our members so I'm hoping many of you have been considering this need. At the end of this month, if we are still without leadership for the quilt show, we will have no other choice but to cancel the show. Please support your guild in this endeavor.

MEMBERSHIP *Cassy Bosworth*

Please welcome our newest members Susan Lansil and Ellen Burnett. The membership now stands at 122 members. Wear your name badges to participate in the monthly drawing at each meeting.

Yearbooks and membership cards will be available to pick up at the September 21st meeting. Yearbooks will be mailed to associate members after September 21. Yearbooks not picked up at the October guild meeting will be mailed out. If you know you will not be able to attend the meetings email me at membership@concordpiecemakers.org and I will mail your yearbook to you.

Welcome to our newest members!



NICKEL SQUARES

Barbara Weiss

Please keep cutting your scraps into nickel squares. The more variety we get, the better. Notice I said "your" scraps. We have been sorting fabric for the yard sale and come across bags of scraps. This means that the committee takes home large volumes of fabric to iron and then cut.

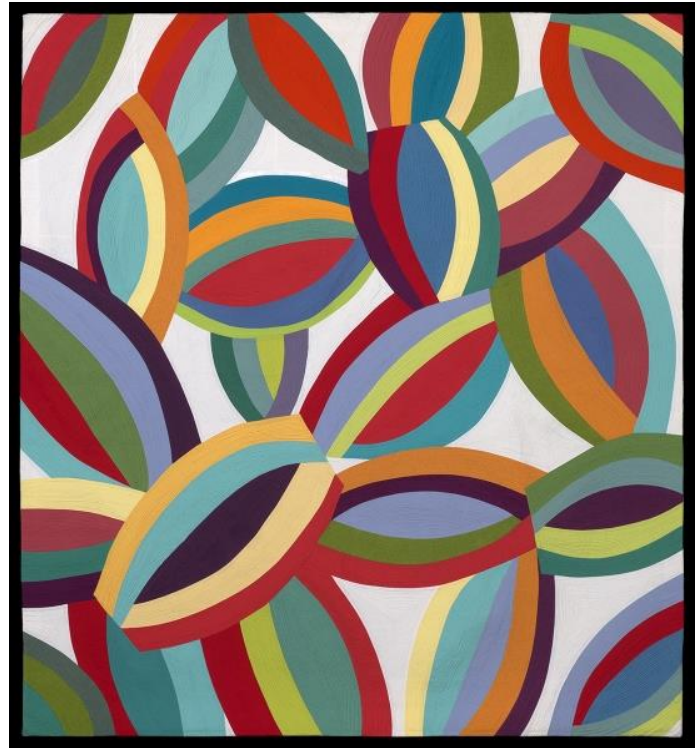
Help out on all fronts by keeping that bag of scraps and taking the time to cut them into 5 inch squares. Bring them to the guild meeting where there will be a basket for collection. Thank you.

Thank you also to the dedicated "nickelers" who have taken bags home to cut - Kitty and Elana.

Programs

September 21 – Speaker: Timna Tarr

My Quilting Journey and How I Use Color



(above photo was taken from her website timnatarr.com)

Award winning quilter, Timna Tarr, will be treating us to a trunk show of her quilts and lecture titled: My Quilting Journey and How I Use Color. Timna's quilts are contemporary works which reference the rich tradition of quilt making. Timna's nationally award-winning quilts have been seen in numerous exhibits including several solo exhibits, quilting magazines, and books.

Be sure to check out her website: www.timnatarr.com to see a gallery of her quilts.

UPCOMING QUILT SHOWS

| Quilt Show | Location | Dates/Times | Admission | For more Information |
|--|---|---|-----------|---|
| Marathon Quilters 20th Anniversary Quilt Show | Hopkinton Center for the Arts 98 Hayden Rowe Street (Route 85), Hopkinton, MA | Saturday, Sept. 17 10:00 am – 4:00 pm Sunday, Sept. 18 10:00 am – 4:00 pm | \$5 | http://www.marathonquilters.com |
| The Church of the Good Shepherd Annual Quilt Show | The Church of the Good Shepherd 209 Union Street, Clinton, MA | Saturday, Sept. 24 10:00am – 3:00pm | \$5 | |
| Merrimack Valley Quilt Guild 35 th Annual Quilt show | Hope Community Church 11 Hale St., Newburyport, MA | Friday, Sept. 30 9:00am – 4:00pm Saturday, Oct. 1 9:00am – 4:00pm | \$8 | https://mvquilters.wordpress.com/quilt-show/ |
| Wayside Quilters Guild 15 th biennial quilt show | Lincoln Sudbury Regional High School 390 Lincoln Rd., Sudbury, MA | Saturday Oct. 1 10:00am – 5:00pm Sunday Oct. 2 10:00am – 4:00pm | \$6 | http://www.waysidequilters.org/quilt-show-2016.html |
| Burlington Quilters' Guild Annual Quilt Show | Middlesex Community College, Campus Center Bedford, MA | Saturday, October 22 10:00am – 5:00 pm Sunday, October 23 10:00am – 4:00pm | \$7 | http://burlingtonquiltersguild.org/ |

Rotary Cut Appliqué Workshop Retreat with Sue Pelland Designs

DATE AND TIME:

Sunday, November 6, 2016 to Tuesday, November 8, 2016

LOCATION:

Hawthorn Suites
835 Upper Union Street
Franklin, MA

Check out her website for more details! <http://suepellanddesigns.com/>

We're on the Web!

See us at:

www.concordpiecemakers.org

CONCORD PIECEMAKERS

P.O. Box 1381

Concord, MA 01742