



# Concord Piecemakers' Grapevine

## January 2015

Maura Cain & Susan Coulter, Editors

Wednesday, January 21, 7:00 pm

At Concord Town House, 22 Monument Square, Concord, MA

### **\*\* January Meeting Change of Venue\*\***

Please be sure to make note of the following information. The January meeting will not be held at the Harvey Wheeler auditorium but at the **Town House building of Concord located at 22 Monument Square**. The town of Concord has provided us this space free of charge in exchange for our relinquishing the Harvey Wheeler space for a town event they are holding on January 21<sup>st</sup>.

The Town House Hearing Room is designed to hold over 100 people, is handicap accessible along with elevators, has a projection screen for the speaker's presentation, and has the tables and chairs needed for our meeting. Parking will be at the church across the street from the building. We hope this temporary change will not cause any attendance problems for our members. We are pleased we were able to agree with this request in a neighborly fashion and yet retain space for our meeting that will accommodate our guild.

### **Message from the President**

Barbara Weiss

#### January 2015 President's Message

Welcome back from vacations and holidays. It is a new year and an opportunity to clear the decks of projects and think about new ideas, colors and techniques. We have an interesting speaker coming up in January. Inspiration arrives with a spark from part of a quilt or a color combination. I hope our speaker will touch our creativity, and we will take away an idea to apply sometime in the future.

Our nominating committee will be calling our membership for the 2015-16 board. We are fortunate that several members have already accepted positions. Think about joining the board and making new friends in the guild. We have a good time together planning programs and keeping the guild interesting for everyone.

(...continued on page 2)

#### **Piecemakers' Calendar 2014-2015**

**Jan 16-19**-Getaway  
Colonial Inn, Gardner, MA  
**Jan 21**-Speaker-Merrill  
Comeau  
**Feb 21**-Quiltathon  
**Mar 18**- Speaker Dilla  
Gooch Tingley  
**Mar 21**- Workshop -Sue  
Pelland  
**Apr 15**-Speaker-Joan  
Ford, ScrapTherapy Trunk  
Show  
**May 20**-Annual Meeting &  
Election of New Officers &  
Sheila Macauley Trunk  
Show  
**Jun 10**-Installation of new  
Officers & Year End Show  
& Tell

#### *Things to bring to the meeting:*

- Name tag
- 5 inch nickel squares
- Library books
- Pillowcases
- String blocks

## The Quilt Side

Barbara Weiss

Recently, I was putting together a quilt with sashing and cornerstones, pinning carefully and taking forever. I decided to “go commando”, which in the quilt world means “going without pins.” It worked out accurately, using the sense of touch at the “sandwich” joints, and was much faster.

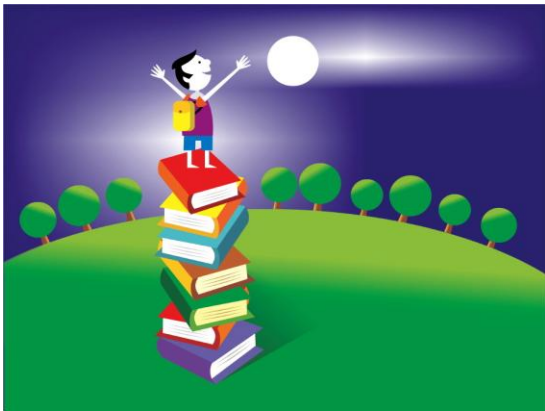
It always helps to have opinions from non-quilting friends when a problem or choice comes up. My husband always has a good eye when it comes to choosing binding colors. He gave me another blue shirt for the binding of his shirts and ties quilt. One shirt was just enough. The pile of fabric really went down when large squares became the backing.

There was also a problem with a final side measurement. After I looked at the difference many times, a friend showed me just where the side had stretched. With a few new seams, the sides matched.

## Library

Sheila Macauley and Janet Rich

Would everyone who has books out for more than a month please return them this month. Anyone who would like the library to purchase a book, please send the name of the book and author to Sheila and she will buy it for the library.



## Membership news

Carol Hartman and Linda Merwin

**Welcome** to our newest member **Rebecca Szetela**.

We now have 131 members!

## PILLOWCASES 2015

Maura Cain

Thank you to everyone who made a pillowcase last year, we donated 147 to local hospitals. Kits will be available at the meeting. While prepping for the Gardner Getaway think about cutting a pillowcase kit. If everyone makes one we'll have at least 50 pillowcases!.



## HOLIDAY NICKEL SQUARES

Janet Crane Vitkevich and Nanette Moffa

As you pack away the leftover fabrics from your December sewing projects, please pause to cut a few 5 inch nickel squares. Festive prints in red, green, blue, white, silver, and gold are especially welcome. We had several requests for holiday assortments of nickel squares at the 2013 quilt show.

## January Speaker Merrill Comeau

Merill Comeau is a mixed media artist creating murals in cloth exploring loss, repair, and rebirth. She brings together incongruous fabrics redolent of past lives: mother-in-law's blouse, worn blue jeans, cast off sheets, plastic mesh vegetable bags, vintage linens and brightly colored fabric samples of discontinued patterns. These cast offs reflect memories of lives lived, social constructs of identity and class, our speeded up consumer cycle and global issues of sustainability. Her pieces are hand and machine stitched.



## QUILTATHON 2015

Marla Richmond

### February 21, 2015

On February 21 Concord Piecemakers will hold our annual Quiltathon at St. Matthews Church in Acton. We start at 8:00 a.m. and keep going until around 4:00 p.m.

The purpose of the Quiltathon is to make Comfort Quilts for people in need. Comfort Quilts are sent to people having cancer treatment, the homeless, battered women and families that have had a fire.

Please make a top (any size, though twin seems to work best) and bring it with a backing. We sandwich the quilt, stitch it together, turn it out, stitch it again, tie it and put a label on it. We also eat, laugh and have a great time. Come for as long as you like. We supply lunch and coffee, but we won't say no to donations of desserts and such. Come get to know your guild better. Feel free to bring friends, kids, etc. Be a hero!

## Wearable Arts Garment Sewing Weekend Pamela Holland

Join the Concord Piecemakers on a Wearable Arts Garment Sewing Weekend on Friday, March 6, 2015, through Sunday, March 8, 2015. We will be staying at the Inn at Mill Falls, 312 Daniel Webster Hwy, Meredith, NH, 03253. The cost is \$240 per person for double occupancy. A deposit of \$150 is due January 21 and the balance of \$90 is due February 21. If you want to getaway even earlier you can add an extra day on Thursday for \$130 per person.

Due to construction in the main building we have been upgraded to rooms in the Chase House. There are lots of quilt stores in the area including Keepsake Quilters which is only 5 minutes away.

For more information or to reserve a spot contact Pam Holland

## **March Workshop – Leaves Galore Technique Class with Sue Pelland**

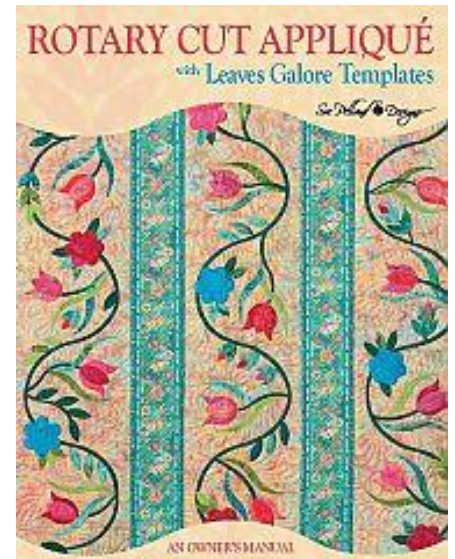
When: March 21<sup>st</sup> 9:30am – 4pm

Where: St. John's Evangelical, Sudbury, MA

Cost: \$30

**In this class you will make samples of some of the things you can do with Leaves Galore. We will make several samples of fused leaf and vine borders, flowers, dragonflies and more. Come see how Sue's quick rotary cut appliqué technique can enhance your quilts. We will not be working on a quilt, but instead will learn many techniques that you can incorporate into your next quilt. Go home with your samples and written instructions on how to make each of them. There is no sewing in class, just cutting, fusing and creating! You will need to have available to you the leaves galore ruler.**

**A sign-up sheet will be available at the January meeting or you may contact Pam Cincotta to sign-up for this workshop. Don't wait! The class is limited to 20 attendees.**



---

We're on the Web!

*See us at:*

**[www.concordpiecemakers.org](http://www.concordpiecemakers.org)**

---

**CONCORD  
PIECEMAKERS**  
P.O. Box 1381  
Concord, MA 01742